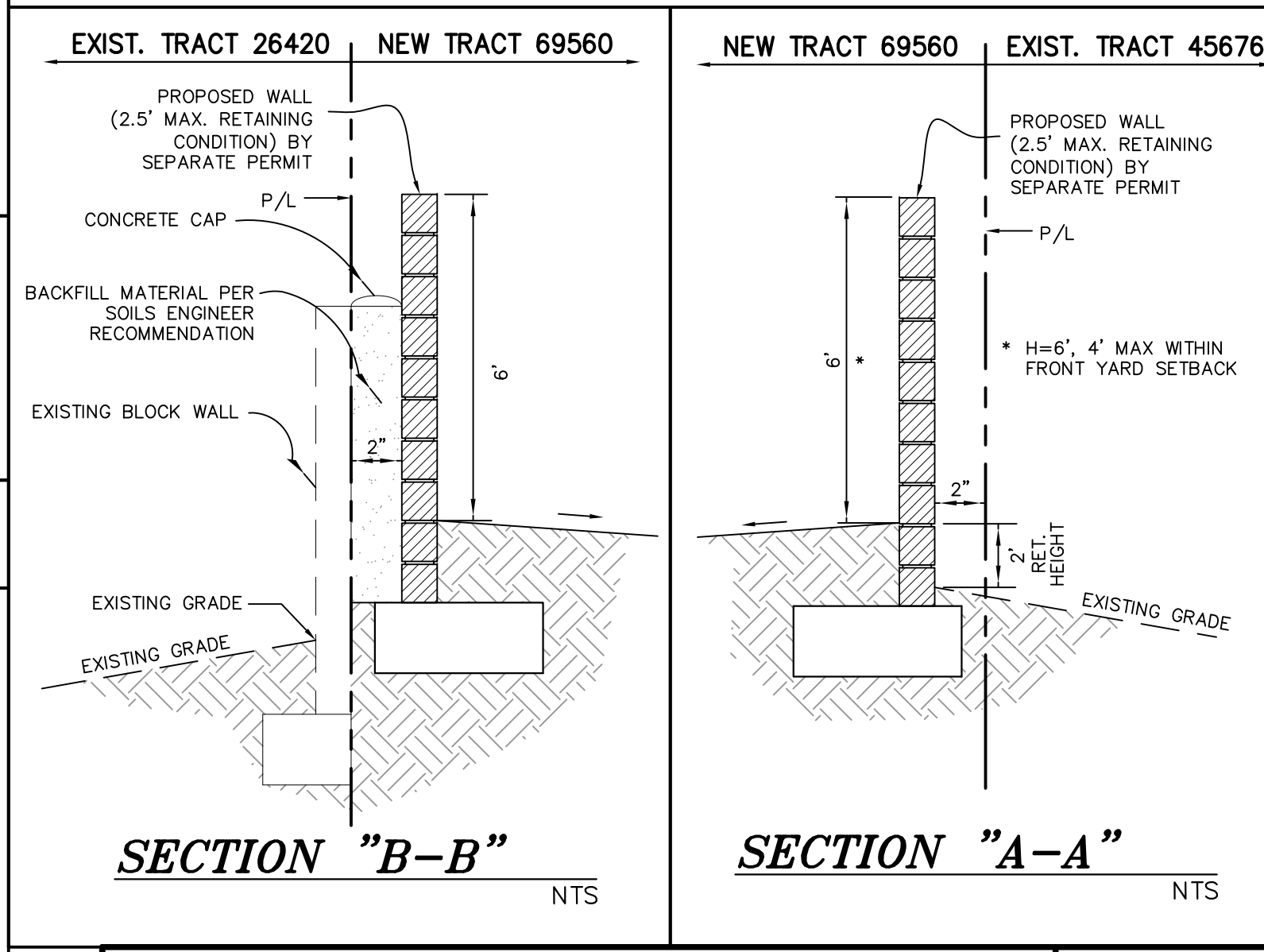
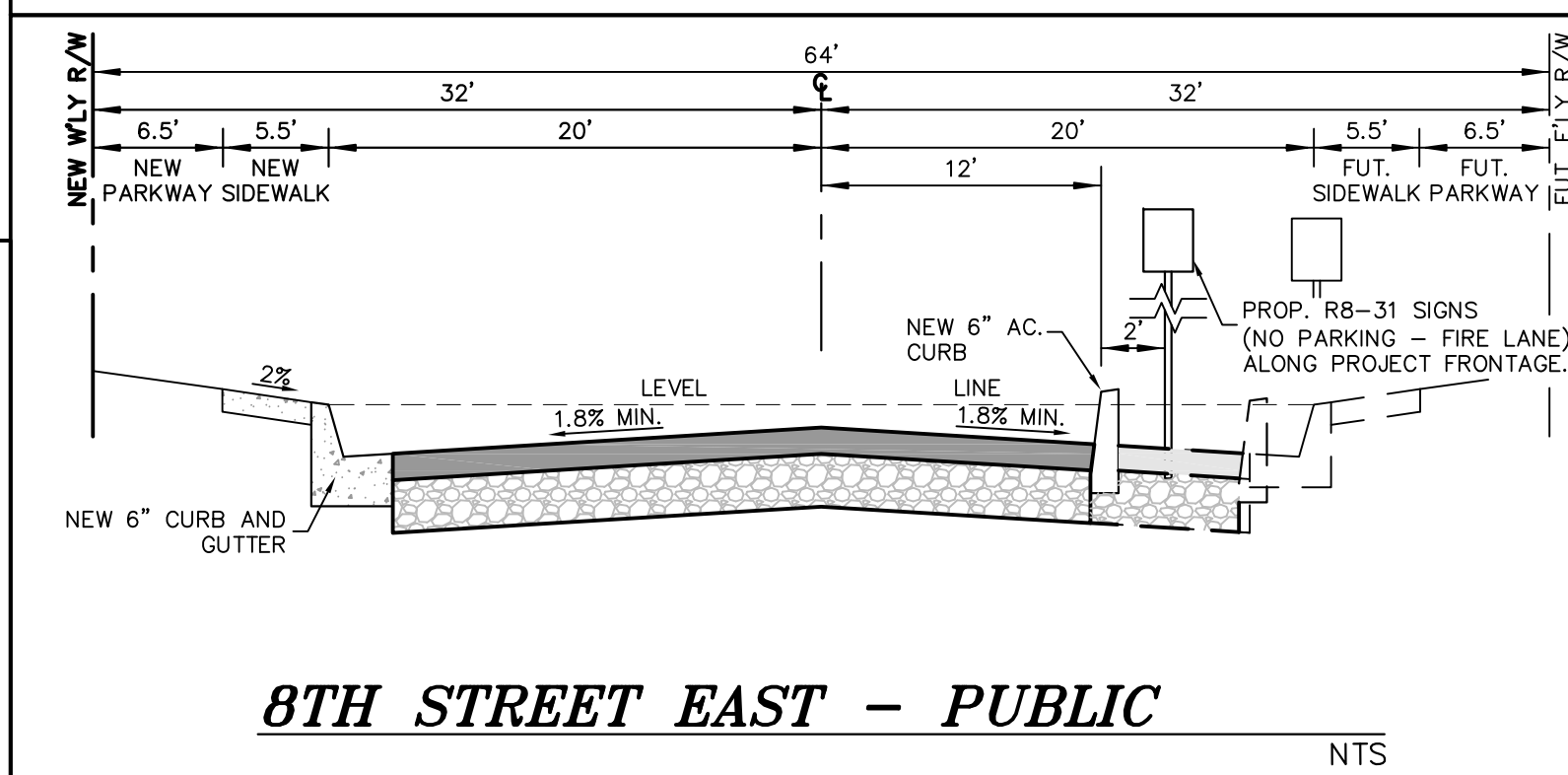
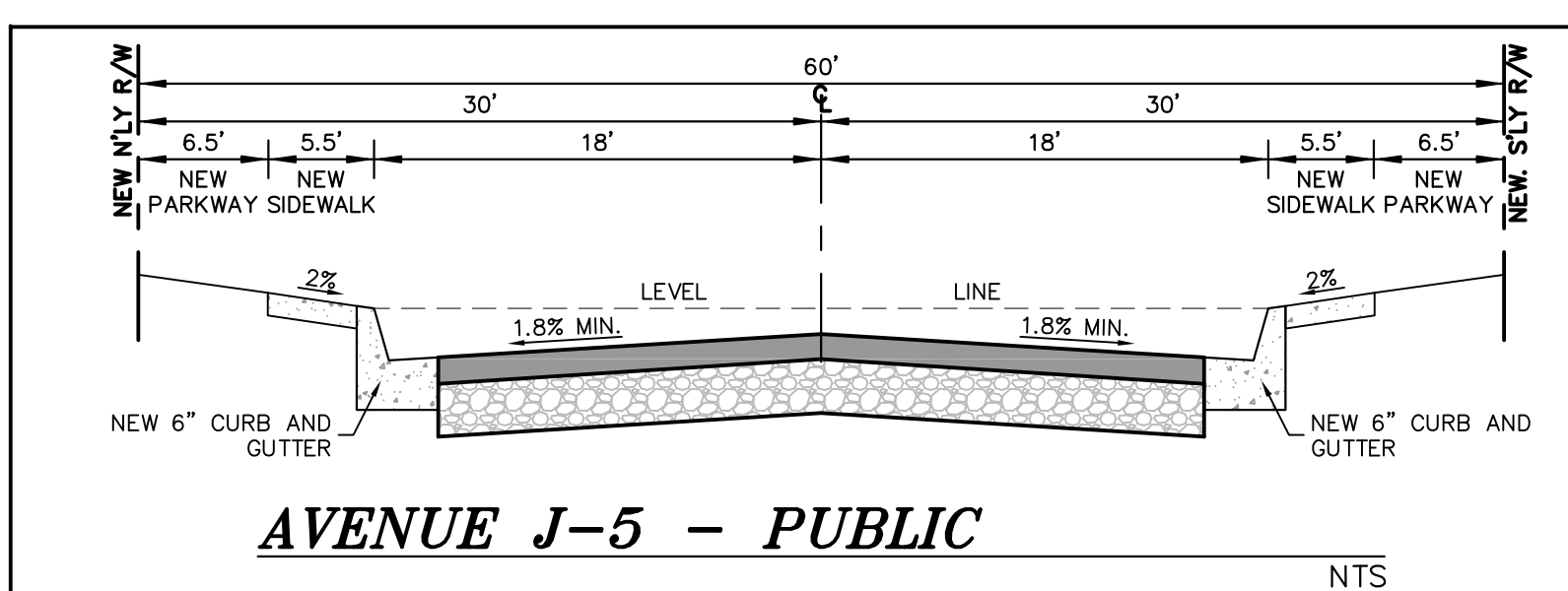
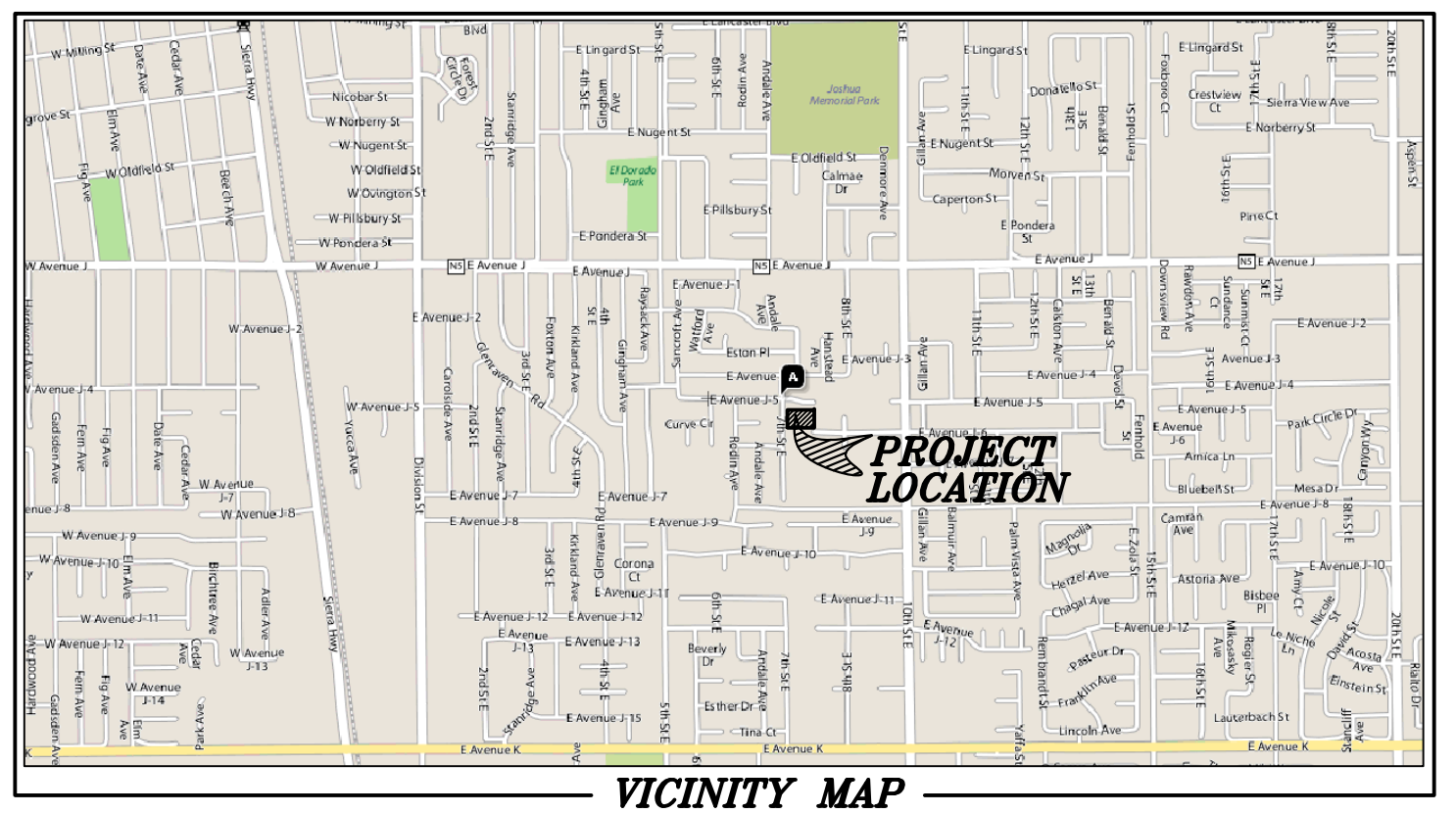
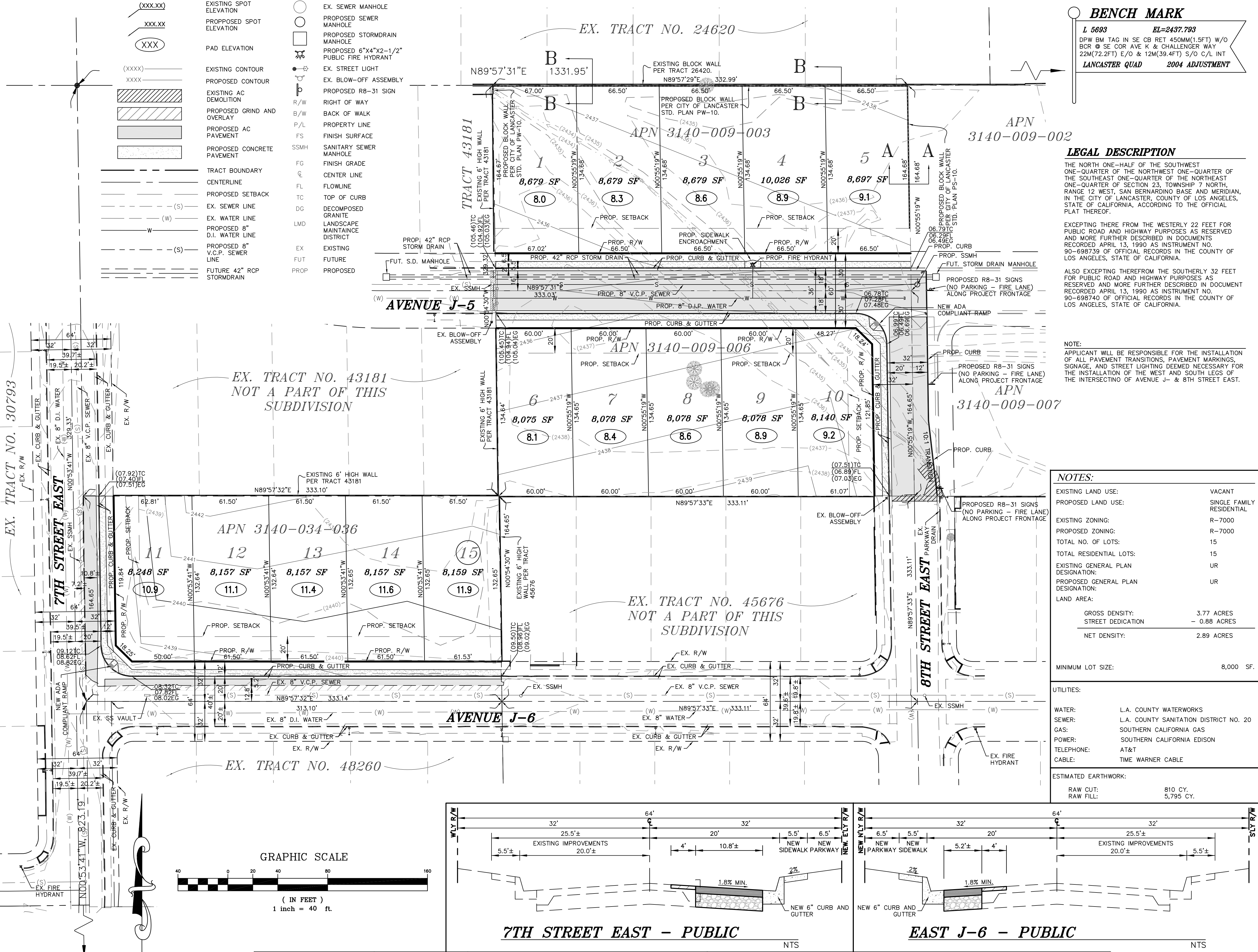


# TENTATIVE TRACT 69560

## LEGEND:

(XXX.XX)	EXISTING SPOT ELEVATION	○	EX. SEWER MANHOLE
XXX.XX	PROPOSED SPOT ELEVATION	○	PROPOSED SEWER MANHOLE
(XXX)	PAD ELEVATION	□	PROPOSED STORMDRAIN MANHOLE
(XXXX)	EXISTING CONTOUR	—	PROPOSED 6"x4"x2-1/2" PUBLIC FIRE HYDRANT
XXXX	PROPOSED CONTOUR	—	EX. STREET LIGHT
XXXX	EXISTING AC DEMOLITION	—	EX. BLOW-OFF ASSEMBLY
XXXX	PROPOSED GRIND AND OVERLAY	—	PROPOSED R8-31 SIGN
XXXX	PROPOSED AC PAVEMENT	—	R/W BACK OF WALK
XXXX	PROPOSED CONCRETE PAVEMENT	—	B/W PROPERTY LINE
XXXX	TRACT BOUNDARY	—	FS FINISH SURFACE
XXXX	CENTERLINE	—	SSMH SANITARY SEWER MANHOLE
XXXX	PROPOSED SETBACK	—	FG FINISH GRADE
(S)	EX. SEWER LINE	—	FL FLOWLINE
(W)	EX. WATER LINE	—	TC TOP OF CURB
(S)	PROPOSED 8" D.I. WATER LINE	—	DG DECOMPOSED GRANITE
(S)	PROPOSED 8" V.C.P. SEWER LINE	—	LMD LANDSCAPE MAINTENANCE DISTRICT
(S)	FUTURE 42" RCP STORMDRAIN	—	EX EXISTING
		—	FUT FUTURE
		—	PROP PROPOSED



APPLICANT/DEVELOPER  
S&H CONSTRUCTION  
BUILDER CORP.  
18641 COVELLO STREET  
RESEDA, CA 91335



**JT ENGINEERING**  
ENGINEERING TECHNOLOGY  
Civil/Structural Engineering • Planning • Land Surveying  
33336 N. Agua Dulce Cyn. Rd, #103, Agua Dulce, CA 91390  
Phone (661) 268-8899 Fax (661) 268-1936  
WWW.JTENGINEERING.COM

REV #	RECORD RCE	DATE	DESCRIPTION
1	APPR.		

REVISIONS	DESCRIPTION

CITY PLAN CKR. APPR.	CITY ENGR. APPR.	DATE

ADD 2430' TO ALL SPOT ELEVATIONS.

CITY OF LANCASTER  
TENTATIVE TRACT MAP

TRACT MAP NO. 69560  
APN: 3140-034-036,  
3140-009-003 & 3140-009-006  
NOTES, BENCH MARK, VICINITY MAP,  
LEGEND AND STREET SECTIONS

DESIGNED: J.J.  
DRAWN: I.I.  
CHECKED: J.J.  
DATE: 07/20/23  
SCALE:  
AS SHOWN  
SHEET No.  
1 OF 1