

EXISTING FLOOR PLAN
SCALE: 1/4" = 1'-0"

SYMBOLS LEGEND:

- SECURITY CAMERA PER SECURITY PLAN, TYPICAL
- EXTERIOR LIGHT FIXTURE, TYP.

FLOOR PLAN NOTES:

- DEFERRED SUBMITTALS SHALL BE LISTED ON THE FRONT OF THE DRAWINGS AND SHALL BE REVIEWED AND APPROVED BY THE ARCHITECT/ENGINEER PRIOR TO SUBMITTAL TO THE BUILDING DEPARTMENT INCLUDING FIRE SPRINKLERS AND TRUSSES. CBC 10B.1A.2 WALL AND CEILING MATERIALS SHALL NOT EXCEED THE FLAME SPREAD CLASSIFICATION IN CBC TABLE 10B.1.1.
- THE WIDTH AND HEIGHT OF REQUIRED EXIT DOORWAYS SHALL BE NOT LESS THAN 3 FEET IN NORMAL WIDTH BY 6 FEET 8 INCHES IN NORMAL HEIGHT AND SHALL BE CAPABLE OF OPENING 30 DEGREES THAT CLEAR WIDTH IS NOT LESS THAN 32 INCHES.
- PANT ALL INTERIOR SURFACES INCLUDING, BUT NOT LIMITED TO WALLS, HARD CEILINGS AND TRIM. PROVIDE ONE PRIMER COAT AND TWO FINISH COATS UNLESS OTHERWISE NOTED.
- CEILING BOARD FINISH SHALL BE LEVEL 4 WOODGROUNDED TEXTURED PAINTED FINISH. INTERIOR WALL AND CEILING FINISHES SHALL BE CLASSIFIED IN ACCORDANCE WITH CBC 905.0 AND TABLE 905.0.
- ADHESIVES, SEALANTS AND CAULKS, PAINTS AND COATINGS, AEROSOLS, PAINTS AND COATINGS SHALL MEET OR EXCEED THE STANDARDS OUTLINED IN SECTION 5.504.4.1, 5.504.4.2, 5.504.4.3, 5.504.4.4, 5.504.4.5, 5.504.4.6, 5.504.4.7, 5.504.4.8, 5.504.4.9, 5.504.4.10, 5.504.4.11, 5.504.4.12, 5.504.4.13, 5.504.4.14, 5.504.4.15, 5.504.4.16, 5.504.4.17, 5.504.4.18, 5.504.4.19, 5.504.4.20, 5.504.4.21, 5.504.4.22, 5.504.4.23, 5.504.4.24, 5.504.4.25, 5.504.4.26, 5.504.4.27, 5.504.4.28, 5.504.4.29, 5.504.4.30, 5.504.4.31, 5.504.4.32, 5.504.4.33, 5.504.4.34, 5.504.4.35, 5.504.4.36, 5.504.4.37, 5.504.4.38, 5.504.4.39, 5.504.4.40, 5.504.4.41, 5.504.4.42, 5.504.4.43, 5.504.4.44, 5.504.4.45, 5.504.4.46, 5.504.4.47, 5.504.4.48, 5.504.4.49, 5.504.4.50, 5.504.4.51, 5.504.4.52, 5.504.4.53, 5.504.4.54, 5.504.4.55, 5.504.4.56, 5.504.4.57, 5.504.4.58, 5.504.4.59, 5.504.4.60, 5.504.4.61, 5.504.4.62, 5.504.4.63, 5.504.4.64, 5.504.4.65, 5.504.4.66, 5.504.4.67, 5.504.4.68, 5.504.4.69, 5.504.4.70, 5.504.4.71, 5.504.4.72, 5.504.4.73, 5.504.4.74, 5.504.4.75, 5.504.4.76, 5.504.4.77, 5.504.4.78, 5.504.4.79, 5.504.4.80, 5.504.4.81, 5.504.4.82, 5.504.4.83, 5.504.4.84, 5.504.4.85, 5.504.4.86, 5.504.4.87, 5.504.4.88, 5.504.4.89, 5.504.4.90, 5.504.4.91, 5.504.4.92, 5.504.4.93, 5.504.4.94, 5.504.4.95, 5.504.4.96, 5.504.4.97, 5.504.4.98, 5.504.4.99, 5.504.4.100.
- DOCUMENTATION SHALL BE PROVIDED TO THE BUILDING INSPECTOR AT THE TIME OF FINAL INSPECTION FOR VERIFICATION OF COMPLIANCE WITH THE REQUIREMENTS OF RESIDENT FLOORING COMPLIES WITH THE REQUIREMENTS OF SECTION 5.504.4.6.
- ANY MATERIAL SUBSTITUTIONS SHALL BE SUBMITTED TO TENANT AND ARCHITECT FOR REVIEW AND APPROVAL PRIOR TO INSTALLATION.
- COORDINATE ALL FINISHES, HARDWARE AND FIXTURES WITH TENANT PRIOR TO ORDERING AND INSTALLING.
- ALL FINISHING, APPLIANCES AND EQUIPMENT SHALL BE INSTALLED TO COMPLY WITH DETAILS 8.1 AND 10.1 ON SHEET A2.0.
- CONTRACTOR TO VERIFY EXISTING AND NEW TOILET ROOM FIXTURES AND ACCESSORIES COMPLY WITH CURRENT CODE AND DETAILS 7.11 AND 12 ON SHEET A2.0.
- ALL EXIT SIGNS SHALL BE ILLUMINATED OR EXTERNALLY ILLUMINATED.
- EXIT SIGNS SHALL BE ILLUMINATED AT ALL TIMES.
- EXIT SIGNS ILLUMINATED BY AN EXTERNAL SOURCE SHALL HAVE AN INTENSITY OF NOT LESS THAN 5 FOOT CANDLES.
- INTERNALLY ILLUMINATED SIGNS SHALL BE LISTED AND LABELED AND SHALL BE INSTALLED IN ACCORDANCE WITH THE MANUFACTURER'S INSTRUCTIONS PER CBC SECTION 2702.
- EXIT SIGNS SHALL BE CONNECTED TO AN EMERGENCY POWER SYSTEM THAT WILL PROVIDE AN ILLUMINATION OF NOT LESS THAN 90 MINUTES IN CASE OF PRIMARY POWER LOSS.
- THE POWER SUPPLY FOR MEANS OF EGRESS ILLUMINATION SHALL NORMALLY BE PROVIDED BY THE PRIMARIES ELECTRICAL SUPPLY. IN THE EVENT OF POWER SUPPLY FAILURE, AN EMERGENCY ELECTRICAL SYSTEM SHALL AUTOMATICALLY ILLUMINATE THE FOLLOWING AREAS:
 - A. AREAS AND UNOCCUPIED EGRESS STAIRWAYS IN ROOMS AND SPACES THAT REQUIRE TWO OR MORE MEANS OF EGRESS.
 - B. CORRIDORS, EXIT ENCLOSURES AND EXIT PASSAGeways IN BUILDINGS REQUIRED TO HAVE TWO OR MORE EXITS.
 - C. EXTERIOR EGRESS COMPONENTS AT BUILDINGS WHERE THE LEVEL OF EXIT DISCHARGE UNIT OR DISCHARGE IS ACCOMPANIED FOR BUILDINGS REQUIRED TO HAVE TWO OR MORE EXITS.
 - D. INTERIOR EXIT DISCHARGE ELEMENTS, AS PERMITTED IN CBC SECTION 100B.1, IN BUILDINGS REQUIRED TO HAVE TWO OR MORE EXITS.
 - E. EXTERIOR LANDINGS, AS REQUIRED BY CBC SECTION 100B.1, FOR EXIT DISCHARGE DOORWAYS IN BUILDINGS REQUIRED TO HAVE TWO OR MORE EXITS.
 - F. THE EMERGENCY POWER SYSTEM SHALL PROVIDE POWER FOR A DURATION OF NOT LESS THAN 90 MINUTES AND SHALL CONSIST OF STORAGE BATTERIES, ULTIMATELY EQUIPMENT OR AN ON-SITE GENERATOR. THE INSTALLATION OF THE EMERGENCY POWER SYSTEM SHALL BE IN ACCORDANCE WITH CBC SECTION 2702.
 - G. EMERGENCY LIGHTING FACILITIES SHALL BE ARRANGED TO PROVIDE INITIAL ILLUMINATION THAT IS AT LEAST AN AVERAGE OF 1 FOOT CANDLE AND A MINIMUM AT ANY POINT OF 0.1 FOOT CANDLE MEASURED ALONG THE PATH OF EGRESS AT FLOOR LEVEL. ILLUMINATION LEVELS SHALL BE PERMITTED TO DIMINUTE TO 0.6 FOOT CANDLE AVERAGE AND A MINIMUM AT ANY POINT OF 0.06 FOOT CANDLE AT THE END OF THE EMERGENCY LIGHTING TIME DURATION. A MAXIMUM MINIMUM ILLUMINATION UNIFORMITY RATIO OF 40 TO 1 SHALL NOT BE EXCEEDED.

DOOR NOTES:

- EXIT DOORS WITH KEY-LOOKING HARDWARE SHALL HAVE A READILY VISIBLE SIGN ON OR ADJACENT TO THE DOOR STATING, THIS DOOR TO REMAIN UNLOCKED WHEN BUILDING IS OCCUPIED (CBC 100B.1.9.5).
- EGRESS DOORS SHALL BE READILY OPERABLE FROM THE EGRESS SIDE WITHOUT THE USE OF A KEY OR ANY SPECIAL KNOWLEDGE OR EFFORT. BUILDING CODE 100B.1.9.5.
- EGRESS DOORS SHALL SWING IN THE DIRECTION OF EGRESS TRAVEL, WHERE SERVING AN OCCUPANT LOAD OF MORE PERSONS OR A GROUP OR OCCUPANCY REGARDLESS OF THE OCCUPANT LOAD. BUILDING CODE 100B.1.9.5.
- PRE-ENGINEERED ASSEMBLIES FOR THE PROTECTION OF OPENINGS, WHEN REQUIRED BY THE BUILDING CODE, SHALL COMPLY WITH BUILDING CODE 713.
- THE MINIMUM WIDTH OF EACH DOOR OPENING SHALL BE SUFFICIENT FOR THE OCCUPANT LOAD THEREOF AND SHALL PROVIDE A CLEAR WIDTH OF NOT LESS THAN 32 INCHES. THE HEIGHT OF DOORS SHALL BE NOT LESS THAN 80 INCHES. BUILDING CODE 100B.1.9.5.
- COMPLY WITH CBC CLIPS AND LATCHES. CBC 100B.1.9.5.
- EXTERIOR DOORS SHALL BE INSTALLED WITH SHOCK RESISTANT C-1 GENERAL NOTES, "SECURITY REQUIREMENTS".
- ALL DOOR HARDWARE SHALL BE SUPPLIED AND INSTALLED BY CONTRACTOR.
- SEE DETAIL 5/A2.0 FOR DOOR REQUIREMENTS.
- SEE DETAIL 5/A2.0 FOR DOOR REQUIREMENTS. CONTRACTOR TO VERIFY ALL CODE REQUIRED SIGNAGE, NEW OR EXISTING, IS INSTALLED PER DETAIL.

GA FILE NO. WP 3510

GENERIC

1 HOUR FIRE

GYPSUM WALLBOARD, WOOD STUDS

Fire Design: One layer 5/8" type X gypsum wallboard or gypsum veneer case applied parallel or at right angles to each side of 2 x 4 wood studs 24" o.c. with 5/8" coated nails, 1-7/8" long. 0.0015 shear, 1/4" heads 7" o.c. joints staggered 24" on opposite sides. (LOAD-BEARING)

Thickness: 5/8" (Type X)
Fire Test: UL R501-147, -48, 9-17-65, UL Design L205, UL R1319-19, 7-22-70, UL Design L314

WALL LEGEND:

- EXISTING EXTERIOR WALL: 6" REINFORCED CMU BLOCK FULL GROUTED
- EXISTING INTERIOR WALL: 24" STUDS AT 16" O.C. WITH BLOOMING AT 4" O.C. MAXIMUM. 2x PRESSURE TREATED SPLY PLATE, DOUBLE TOP PLATES AND 5/8" OYSPM BOARD (WATER RESISTANT AT TOILET SIDS) APPLIED PARALLEL OR AT RIGHT ANGLES TO EACH SIDE OF STUDS WITH 64 COATED NAILS, 1-7/8" LONG, 0.0015" SHANK, 1/4" HEADS 7" O.C. (GA FILE NO. WP 3510)
- TENANT WALL: 24" STUDS AT 16" O.C. WITH BLOOMING AT 4" O.C. MAXIMUM. 2x PRESSURE TREATED SPLY PLATE, DOUBLE TOP PLATES AND 5/8" OYSPM BOARD (WATER RESISTANT AT TOILET SIDS) APPLIED PARALLEL OR AT RIGHT ANGLES TO EACH SIDE OF STUDS WITH 64 COATED NAILS, 1-7/8" LONG, 0.0015" SHANK, 1/4" HEADS 7" O.C. (GA FILE NO. WP 3510)

ICC-ES Evaluation Report

ICC-ES-2080

Report title: ICC-ES-2080

Report number: ICC-ES-2080

Report date: 06/24/2010

Report version: 1.0

Report status: Approved

Report type: Evaluation Report

Report subject: ICC-ES-2080

Report description: ICC-ES-2080

Report details: ICC-ES-2080

Report notes: ICC-ES-2080

Report references: ICC-ES-2080

Report approvals: ICC-ES-2080

Report signatures: ICC-ES-2080

Report stamps: ICC-ES-2080

Report seals: ICC-ES-2080

Report marks: ICC-ES-2080

Report symbols: ICC-ES-2080

Report icons: ICC-ES-2080

Report images: ICC-ES-2080

Report graphics: ICC-ES-2080

Report tables: ICC-ES-2080

Report figures: ICC-ES-2080

Report charts: ICC-ES-2080

Report diagrams: ICC-ES-2080

Report forms: ICC-ES-2080

Report documents: ICC-ES-2080

Report files: ICC-ES-2080

Report folders: ICC-ES-2080

Report drives: ICC-ES-2080

Report networks: ICC-ES-2080

Report servers: ICC-ES-2080

Report databases: ICC-ES-2080

Report applications: ICC-ES-2080

Report services: ICC-ES-2080

Report devices: ICC-ES-2080

Report components: ICC-ES-2080

Report peripherals: ICC-ES-2080

Report accessories: ICC-ES-2080

Report software: ICC-ES-2080

Report hardware: ICC-ES-2080

Report firmware: ICC-ES-2080

Report drivers: ICC-ES-2080

Report utilities: ICC-ES-2080

Report tools: ICC-ES-2080

Report equipment: ICC-ES-2080

Report machinery: ICC-ES-2080

Report vehicles: ICC-ES-2080

Report vessels: ICC-ES-2080

Report aircraft: ICC-ES-2080

Report spacecraft: ICC-ES-2080

Report submarines: ICC-ES-2080

Report satellites: ICC-ES-2080

Report robots: ICC-ES-2080

Report drones: ICC-ES-2080

Report prosthetics: ICC-ES-2080

Report implants: ICC-ES-2080

Report medical: ICC-ES-2080

Report dental: ICC-ES-2080

Report veterinary: ICC-ES-2080

Report agricultural: ICC-ES-2080

Report industrial: ICC-ES-2080

Report commercial: ICC-ES-2080

Report residential: ICC-ES-2080

Report institutional: ICC-ES-2080

Report government: ICC-ES-2080

Report military: ICC-ES-2080

Report law enforcement: ICC-ES-2080

Report fire department: ICC-ES-2080

Report police: ICC-ES-2080

Report emergency: ICC-ES-2080

Report disaster: ICC-ES-2080

Report relief: ICC-ES-2080

Report aid: ICC-ES-2080

Report assistance: ICC-ES-2080

Report support: ICC-ES-2080

Report help: ICC-ES-2080

Report service: ICC-ES-2080

Report care: ICC-ES-2080

Report maintenance: ICC-ES-2080

Report repair: ICC-ES-2080

Report replacement: ICC-ES-2080

Report upgrade: ICC-ES-2080

Report update: ICC-ES-2080

Report patch: ICC-ES-2080

Report fix: ICC-ES-2080

Report solution: ICC-ES-2080

Report answer: ICC-ES-2080

Report response: ICC-ES-2080

Report action: ICC-ES-2080

Report result: ICC-ES-2080

Report outcome: ICC-ES-2080

Report effect: ICC-ES-2080

Report impact: ICC-ES-2080

Report influence: ICC-ES-2080

Report power: ICC-ES-2080

Report force: ICC-ES-2080

Report strength: ICC-ES-2080

Report energy: ICC-ES-2080

Report work: ICC-ES-2080

Report effort: ICC-ES-2080

Report labor: ICC-ES-2080

Report time: ICC-ES-2080

Report cost: ICC-ES-2080

Report value: ICC-ES-2080

Report worth: ICC-ES-2080

Report quality: ICC-ES-2080

Report quantity: ICC-ES-2080

Report amount: ICC-ES-2080

Report number: ICC-ES-2080

Report count: ICC-ES-2080

Report total: ICC-ES-2080

Report sum: ICC-ES-2080

Report average: ICC-ES-2080

Report mean: ICC-ES-2080

Report median: ICC-ES-2080

Report mode: ICC-ES-2080

Report range: ICC-ES-2080

Report variance: ICC-ES-2080

Report standard deviation: ICC-ES-2080

Report coefficient of variation: ICC-ES-2080

Report correlation coefficient: ICC-ES-2080

Report regression coefficient: ICC-ES-2080

Report intercept: ICC-ES-2080

Report slope: ICC-ES-2080

Report area: ICC-ES-2080

Report volume: ICC-ES-2080

Report mass: ICC-ES-2080

Report weight: ICC-ES-2080

Report length: ICC-ES-2080

Report width: ICC-ES-2080

Report height: ICC-ES-2080

Report depth: ICC-ES-2080

Report thickness: ICC-ES-2080

Report diameter: ICC-ES-2080

Report radius: ICC-ES-2080

Report circumference: ICC-ES-2080

Report surface area: ICC-ES-2080

Report volume: ICC-ES-2080

Report mass: ICC-ES-2080

Report weight: ICC-ES-2080

Report length: ICC-ES-2080

Report width: ICC-ES-2080

Report height: ICC-ES-2080

Report depth: ICC-ES-2080

Report thickness: ICC-ES-2080

Report diameter: ICC-ES-2080

Report radius: ICC-ES-2080

Report circumference: ICC-ES-2080

Report surface area: ICC-ES-2080

Report volume: ICC-ES-2080

Report mass: ICC-ES-2080

Report weight: ICC-ES-2080

Report length: ICC-ES-2080

Report width: ICC-ES-2080

Report height: ICC-ES-2080

Report depth: ICC-ES-2080

Report thickness: ICC-ES-2080

Report diameter: ICC-ES-2080

Report radius: ICC-ES-2080

Report circumference: ICC-ES-2080

Report surface area: ICC-ES-2080

Report volume: ICC-ES-2080

Report mass: ICC-ES-2080

Report weight: ICC-ES-2080

Report length: ICC-ES-2080

Report width: ICC-ES-2080

Report height: ICC-ES-2080

Report depth: ICC-ES-2080

Report thickness: ICC-ES-2080

Report diameter: ICC-ES-2080

Report radius: ICC-ES-2080

Report circumference: ICC-ES-2080

Report surface area: ICC-ES-2080

Report volume: ICC-ES-2080

Report mass: ICC-ES-2080

Report weight: ICC-ES-2080

Report length: ICC-ES-2080

Report width: ICC-ES-2080

Report height: ICC-ES-2080

Report depth: ICC-ES-2080

Report thickness: ICC-ES-2080

Report diameter: ICC-ES-2080

Report radius: ICC-ES-2080

Report circumference: ICC-ES-2080

Report surface area: ICC-ES-2080

Report volume: ICC-ES-2080

Report mass: ICC-ES-2080

Report weight: ICC-ES-2080

Report length: ICC-ES-2080

Report width: ICC-ES-2080

Report height: ICC-ES-2080

Report depth: ICC-ES-2080

Report thickness: ICC-ES-2080

Report diameter: ICC-ES-2080

Report radius: ICC-ES-2080

Report circumference: ICC-ES-2080

Report surface area: ICC-ES-2080

Report volume: ICC-ES-2080

Report mass: ICC-ES-2080

Report weight: ICC-ES-2080

Report length: ICC-ES-2080

Report width: ICC-ES-2080

Report height: ICC-ES-2080

Report depth: ICC-ES-2080

Report thickness: ICC-ES-2080

Report diameter: ICC-ES-2080

Report radius: ICC-ES-2080

Report circumference: ICC-ES-2080

Report surface area: ICC-ES-2080

Report volume: ICC-ES-2080

Report mass: ICC-ES-2080

Report weight: ICC-ES-2080

Report length: ICC-ES-2080

Report width: ICC-ES-2080

Report height: ICC-ES-2080

Report depth: ICC-ES-2080

Report thickness: ICC-ES-2080

Report diameter: ICC-ES-2080

Report radius: ICC-ES-2080

Report circumference: ICC-ES-2080

Report surface area: ICC-ES-2080

Report volume: ICC-ES-2080

Report mass: ICC-ES-2080

Report weight: ICC-ES-2080

Report length: ICC-ES-2080

Report width: ICC-ES-2080

Report height: ICC-ES-2080

Report depth: ICC-ES-2080

Report thickness: ICC-ES-2080

Report diameter: ICC-ES-2080

Report radius: ICC-ES-2080

Report circumference: ICC-ES-2080

Report surface area: ICC-ES-2080

Report volume: ICC-ES-2080

Report mass: ICC-ES-2080

Report weight: ICC-ES-2080

Report length: ICC-ES-2080

Report width: ICC-ES-2080

Report height: ICC-ES-2080

Report depth: ICC-ES-2080

Report thickness: ICC-ES-2080

Report diameter: ICC-ES-2080

Report radius: ICC-ES-2080

Report circumference: ICC-ES-2080

Report surface area: ICC-ES-2080

Report volume: ICC-ES-2080

Report mass: ICC-ES-2080

Report weight: ICC-ES-2080

Report length: ICC-ES-2080

Report width: ICC-ES-2080

Report height: ICC-ES-2080

Report depth: ICC-ES-2080

Report thickness: ICC-ES-2080

Report diameter: ICC-ES-2080

Report radius: ICC-ES-2080

Report circumference: ICC-ES-2080

Report surface area: ICC-ES-2080

Report volume: ICC-ES-2080

Report mass: ICC-ES-2080

Report weight: ICC-ES-2080

Report length: ICC-ES-2080

Report width: ICC-ES-2080

Report height: ICC-ES-2080

Report depth: ICC-ES-2080

Report thickness: ICC-ES-2080

Report diameter: ICC-ES-2080

Report radius: ICC-ES-2080

Report circumference: ICC-ES-2080

Report surface area: ICC-ES-2080

Report volume: ICC-ES-2080

Report mass: ICC-ES-2080

Report weight: ICC-ES-2080

Report length: ICC-ES-2080

Report width: ICC-ES-2080

Report height: ICC-ES-2080

Report depth: ICC-ES-2080

Report thickness: ICC-ES-2080

Report diameter: ICC-ES-2080

Report radius: ICC-ES-2080

Report circumference: ICC-ES-2080

Report surface area: ICC-ES-2080

Report volume: ICC-ES-2080

Report mass: ICC-ES-2080

Report weight: ICC-ES-2080

Report length: ICC-ES-2080

Report width: ICC-ES-2080

Report height: ICC-ES-2080

Report depth: ICC-ES-2080

Report thickness: ICC-ES-2080

Report diameter: ICC-ES-2080

Report radius: ICC-ES-2080

Report circumference: ICC-ES-2080

Report surface area: ICC-ES-2080

Report volume: ICC-ES-2080

Report mass: ICC-ES-2080

Report weight: ICC-ES-2080

Report length: ICC-ES-2080

Report width: ICC-ES-2080

Report height: ICC-ES-2080

Report depth: ICC-ES-2080

Report thickness: ICC-ES-2080

Report diameter: ICC-ES-2080

Report radius: ICC-ES-2080

Report circumference: ICC-ES-2080

Report surface area: ICC-ES-2080

Report volume: ICC-ES-2080

Report mass: ICC-ES-2080

Report weight: ICC-ES-2080

Report length: ICC-ES-2080

Report width: ICC-ES-2080

Report height: ICC-ES-2080

Report depth: ICC-ES-2080

Report thickness: ICC-ES-2080

Report diameter: ICC-ES-2080

Report radius: ICC-ES-2080

Report circumference: ICC-ES-2080

Report surface area: ICC-ES-2080

Report volume: ICC-ES-2080

Report mass: ICC-ES-2080

Report weight: ICC-ES-2080

Report length: ICC-ES-2080

Report width: ICC-ES-2080

Report height: ICC-ES-2080

Report depth: ICC-ES-2080

Report thickness: ICC-ES-2080

Report diameter: ICC-ES-2080

Report radius: ICC-ES-2080

Report circumference: ICC-ES-2080

Report surface area: ICC-ES-2080

Report volume: ICC-ES-2080

Report mass: ICC-ES-2080

Report weight: ICC-ES-2080

Report length: ICC-ES-2080

Report width: ICC-ES-2080

Report height: ICC-ES-2080

Report depth: ICC-ES-2080

Report thickness: ICC-ES-2080

Report diameter: ICC-ES-2080

Report radius: ICC-ES-2080

Report circumference: ICC-ES-2080

Report surface area: ICC-ES-2080

Report volume: ICC-ES-2080

Report mass: ICC-ES-2080

Report weight: ICC-ES-2080

Report length: ICC-ES-2080

Report width: ICC-ES-2080

Report height: ICC-ES-2080

Report depth: ICC-ES-2080

Report thickness: ICC-ES-2080

Report diameter: ICC-ES-2080

Report radius: ICC-ES-2080

Report circumference: ICC-ES-2080

Report surface area: ICC-ES-2080

Report volume: ICC-ES-2080

Report mass: ICC-ES-2080

Report weight: ICC-ES-2080

Report length: ICC-ES-2080

Report width: ICC-ES-2080

Report height: ICC-ES-2080

Report depth: ICC-ES-2080

Report thickness: ICC-ES-2080

Report diameter: ICC-ES-2080

Report radius: ICC-ES-2080

Report circumference: ICC-ES-2080

Report surface area: ICC-ES-2080

Report volume: ICC-ES-2080

Report mass: ICC-ES-2080

Report weight: ICC-ES-2080

Report length: ICC-ES-2080

Report width: ICC-ES-2080

Report height: ICC-ES-2080

Report depth: ICC-ES-2080

Report thickness: ICC-ES-2080

Report diameter: ICC-ES-2080

Report radius: ICC-ES-2080

Report circumference: ICC-ES-2080

Report surface area: ICC-ES-2080

Report volume: ICC-ES-2080

Report mass: ICC-ES-2080

Report weight: ICC-ES-2080

Report length: ICC-ES-2080

Report width: ICC-ES-2080

Report height: ICC-ES-2080

Report depth: ICC-ES-2080

Report thickness: ICC-ES-2080

Report diameter: ICC-ES-2080

Report radius: ICC-ES-2080

Report circumference: ICC-ES-2080

Report surface area: ICC-ES-2080

Report volume: ICC-ES-2080

Report mass: ICC-ES-2080

Report weight: ICC-ES-2080

Report length: ICC-ES-2080

Report width: ICC-ES-2080

Report height: ICC-ES-2080

Report depth: ICC-ES-2080

Report thickness: ICC-ES-2080

Report diameter: ICC-ES-2080

Report radius: ICC-ES-2080

Report circumference: ICC-ES-2080

Report surface area: ICC-ES-2080

Report volume: ICC-ES-2080

Report mass: ICC-ES-2080

Report weight: ICC-ES-2080

Report length: ICC-ES-2080

Report width: ICC-ES-2080

Report height: ICC-ES-2080

Report depth: ICC-ES-2080

Report thickness: ICC-ES-2080

Report diameter: ICC-ES-2080

Report radius: ICC-ES-2080

Report circumference: ICC-ES-2080

Report surface area: ICC-ES-2080

Report volume: ICC-ES-2080

Report mass: ICC-ES-2080

Report weight: ICC-ES-2080

Report length: ICC-ES-2080

Report width: ICC-ES-2080

Report height: ICC-ES-2080

Report depth: ICC-ES-2080

Report thickness: ICC-ES-2080

Report diameter: ICC-ES-2080

Report radius: ICC-ES-2080

Report circumference: ICC-ES-2080

Report surface area: ICC-ES-2080

Report volume: ICC-ES-2080

Report mass: ICC-ES-2080

Report weight: ICC-ES-2080

Report length: ICC-ES-2080

Report width: ICC-ES-2080

Report height: ICC-ES-2080

Report depth: ICC-ES-2080

Report thickness: ICC-ES-2080

Report diameter: ICC-ES-2080

Report radius: ICC-ES-2080

Report circumference: ICC-ES-2080

Report surface area: ICC-ES-2080

Report volume: ICC-ES-2080

Report mass: ICC-ES-2080

Report weight: ICC-ES-2080

Report length: ICC-ES-2080

Report width: ICC-ES-2080

Report height: ICC-ES-2080

Report depth: ICC-ES-2080

Report thickness: ICC-ES-2080

Report diameter: ICC-ES-2080

Report radius: ICC-ES-2080

Report circumference: ICC-ES-2080

Report surface area: ICC-ES-2080

Report volume: ICC-ES-2080

Report mass: ICC-ES-2080

Report weight: ICC-ES-2080

Report length: ICC-ES-2080

Report width: ICC-ES-2080

Report height: ICC-ES-2080

Report depth: ICC-ES-2080

Report thickness: ICC-ES-2080

Report diameter: ICC-ES-2080

Report radius: ICC-ES-2080

Report circumference: ICC-ES-2080

Report surface area: ICC-ES-2080

Report volume: ICC-ES-2080

Report mass: ICC-ES-2080

Report weight: ICC-ES-2080

Report length: ICC-ES-2080

Report width: ICC-ES-2080

Report height: ICC-ES-2080

Report depth: ICC-ES-2080

Report thickness: ICC-ES-2080

Report diameter: ICC-ES-2080

Report radius: ICC-ES-2080

Report circumference: ICC-ES-2080

Report surface area: ICC-ES-2080

Report volume: ICC-ES-2080

Report mass: ICC-ES-2080

Report weight: ICC-ES-2080

Report length: ICC-ES-2080

Report width: ICC-ES-2080

Report height: ICC-ES-2080

Report depth: ICC-ES-2080

Report thickness: ICC-ES-2080

Report diameter: ICC-ES-2080

Report radius: ICC-ES-2080

Report circumference: ICC-ES-2080

Report surface area: ICC-ES-2080

Report volume: ICC-ES-2080

Report mass: ICC-ES-2080

Report weight: ICC-ES-2080

Report length: ICC-ES-2080

Report width: ICC-ES-2080

Report height: ICC-ES-2080

Report depth: ICC-ES-2080

Report thickness: ICC-ES-2080

Report diameter: ICC-ES-2080

Report radius: ICC-ES-2080

Report circumference: ICC-ES-2080

Report surface area: ICC-ES-2080

Report volume: ICC-ES-2080

Report mass: ICC-ES-2080

Report weight: ICC-ES-2080

Report length: ICC-ES-2080

Report width: ICC-ES-2080

Report height: ICC-ES-2080

Report depth: ICC-ES-2080

Report thickness: ICC-ES-2080

Report diameter: ICC-ES-2080

Report radius: ICC-ES-2080

Report circumference: ICC-ES-2080

Report surface area: ICC-ES-2080

Report volume: ICC-ES-2080

Report mass: ICC-ES-2080

Report weight: ICC-ES-2080

Report length: ICC-ES-2080

Report width: ICC-ES-2080

Report height: ICC-ES-2080

Report depth: ICC-ES-2080

Report thickness: ICC-ES-2080

Report diameter: ICC-ES-2080

Report radius: ICC-ES-2080

Report circumference: ICC-ES-2080

Report surface area: ICC-ES-2080

Report volume: ICC-ES-2080

Report mass: ICC-ES-2080

Report weight: ICC-ES-2080

Report length: ICC-ES-2080

Report width: ICC-ES-2080

Report height: ICC-ES-2080

Report depth: ICC-ES-2080

Report thickness: ICC-ES-2080

Report diameter: ICC-ES

1. AT LEAST ONE ACCESSIBLE ROUTE SHALL BE PROVIDED FROM THE SITE FROM ACCESSIBLE PARKING SPACES, LOADING ZONES, PUBLIC STREETS AND SIDEWALKS, AND PUBLIC TRANSPORTATION STOPS TO ACCESSIBLE BUILDING OR FACILITY ENTRANCE. THIS ROUTE SHALL BE THE MOST DIRECT ROUTE AVAILABLE TO THE USER.

2. WHERE MORE THAN ONE ROUTE IS PROVIDED, ALL ROUTES MUST BE ACCESSIBLE.

3. ACCESSIBLE ROUTES ARE NOT REQUIRED IF NO FEASIBLE ACCESS IS PROVIDED.

4. ACCESSIBLE ROUTES SHALL COMPLY WITH ONE OF THE FOLLOWING COMPONENTS: WALKING SURFACES WITH A FINISHING SLOPE LESS THAN 1:50, SIDEWALKS, RAMP, CURB RAMP, CEILING-FLOORED SIDE, LEVELING AND PLATFORM JTS.

5. CROSS SLOPES SHALL NOT EXCEED 1:48 (2%). FINISHING SLOPE OF SIDEWALKS SHALL NOT EXCEED THE GENERAL GRADE FOR THE ADJACENT STREET OR HIGHWAY.

6. CLEAR WIDTH SHALL BE 36" MINIMUM. WITHIN EMPLOYEE WORK AREAS CLEARANCES ON BUILDING OR FACILITY ENTRANCE PATHS SHALL BE PROVIDED TO BE DECREASED BY WORK AREA EQUIPMENT PROVIDED THAT THE DECREASE IS ESSENTIAL TO THE FUNCTION OF WORK BEING DONE.

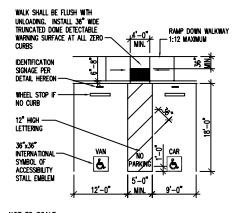
7. CLEAR WIDTH MAY BE REDUCED TO 27" FOR A LENGTH OF 36" MAXIMUM PROVIDED THAT REDUCED WIDTH SEGMENTS ARE SEPARATED BY SEGMENTS THAT ARE 48" LONG MINIMUM AND 36" WIDE MINIMUM.

8. THE CLEAR WIDTH FOR MAKING SPACES IS CORRIDORS SERVING AN OCCUPANCY LOAD OF 10 OR MORE SHALL BE 48" MINIMUM.

9. CLEAR WIDTH OF SIDEWALKS AND WALKS SHALL BE 48" MINIMUM. CLEARANCE ON SIDEWALKS AT PLANNING, WHEN BECAUSE OF SIDEWALKS AND/OR RESTRICTED, NATURAL OBSTACLES, ON OTHER EXISTING CONDITIONS, THE WIDTH MAY BE REDUCED TO 36" FOR THE EMPLOYEE ACCESS IF COMPLIANCE WITH THE 48" CREATES AN UNREASONABLE OBSTRUCTION.

10. CLEAR WIDTH FOR ACCESS SHALL BE 36" MINIMUM IF EXISTING CONDITIONS ON ONE SIDE AND 48" IF SERVING ON BOTH SIDES.

11. WHEN THE ACCESSIBLE ROUTE MAKES A 90° TURN AROUND AN ELEMENT LESS THAN 48" WIDE, CLEAR WIDTH SHALL BE 48" MIN. APPROACHING THE TURN, 48" MIN. AT THE TURN AND 48" MIN. LEAVING THE TURN. WHERE THE CLEAR WIDTH IS 48" MIN. AT THE TURN IS 48" MIN. CLEAR WITHIN 36" MIN.



NOTES:

1. ACCESSIBLE ROUTE SHALL ALLOW AN ACCESSIBLE ROUTE, EXCEPT FULL REQUIRED LENGTH OF PARKING SPACES) THEY SHALL NOT BE FLUSH WITH UNPAVED SURFACES. UNPAVED SURFACES SHALL BE 1/2" MIN. WIDE TRUNCATED CONE DETECTABLE WALKING SURFACE AT ALL ZERO CURVES.

2. IDENTIFICATION SIGNAGE AND LETTERS SHALL BE 36" MIN. HIGH.

3. IDENTIFICATION SIGNAGE AND LETTERS SHALL BE 36" MIN. HIGH.

4. IDENTIFICATION SIGNAGE AND LETTERS SHALL BE 36" MIN. HIGH.

5. IDENTIFICATION SIGNAGE AND LETTERS SHALL BE 36" MIN. HIGH.

6. IDENTIFICATION SIGNAGE AND LETTERS SHALL BE 36" MIN. HIGH.

7. IDENTIFICATION SIGNAGE AND LETTERS SHALL BE 36" MIN. HIGH.

8. IDENTIFICATION SIGNAGE AND LETTERS SHALL BE 36" MIN. HIGH.

9. IDENTIFICATION SIGNAGE AND LETTERS SHALL BE 36" MIN. HIGH.

10. IDENTIFICATION SIGNAGE AND LETTERS SHALL BE 36" MIN. HIGH.

11. IDENTIFICATION SIGNAGE AND LETTERS SHALL BE 36" MIN. HIGH.

12. IDENTIFICATION SIGNAGE AND LETTERS SHALL BE 36" MIN. HIGH.

13. IDENTIFICATION SIGNAGE AND LETTERS SHALL BE 36" MIN. HIGH.

PASSENGER DROP-OFF AND LOADING ZONES:

1. PASSENGER DROP-OFF AND LOADING ZONES SHALL PROVIDE A VEHICLE PULL-UP SPACE OF 36" WIDE MINIMUM AND 20' LONG MINIMUM.

2. PASSENGER DROP-OFF AND LOADING ZONES SHALL PROVIDE ACCESS ROADS ADJACENT AND PARALLEL TO THE VEHICLE PULL-UP SPACE.

3. ACCESSIBLE ROUTES SHALL BE 36" WIDE AND SHALL EXTEND THE FULL LENGTH OF THE VEHICLE PULL-UP SPACES.

4. ACCESSIBLE ROUTES SHALL BE 36" WIDE AND SHALL EXTEND THE FULL LENGTH OF THE VEHICLE PULL-UP SPACES.

5. ACCESSIBLE ROUTES SHALL BE 36" WIDE AND SHALL EXTEND THE FULL LENGTH OF THE VEHICLE PULL-UP SPACES.

6. ACCESSIBLE ROUTES SHALL BE 36" WIDE AND SHALL EXTEND THE FULL LENGTH OF THE VEHICLE PULL-UP SPACES.

7. ACCESSIBLE ROUTES SHALL BE 36" WIDE AND SHALL EXTEND THE FULL LENGTH OF THE VEHICLE PULL-UP SPACES.

8. ACCESSIBLE ROUTES SHALL BE 36" WIDE AND SHALL EXTEND THE FULL LENGTH OF THE VEHICLE PULL-UP SPACES.

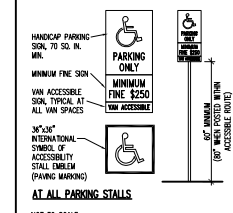
9. ACCESSIBLE ROUTES SHALL BE 36" WIDE AND SHALL EXTEND THE FULL LENGTH OF THE VEHICLE PULL-UP SPACES.

10. ACCESSIBLE ROUTES SHALL BE 36" WIDE AND SHALL EXTEND THE FULL LENGTH OF THE VEHICLE PULL-UP SPACES.

11. ACCESSIBLE ROUTES SHALL BE 36" WIDE AND SHALL EXTEND THE FULL LENGTH OF THE VEHICLE PULL-UP SPACES.

12. ACCESSIBLE ROUTES SHALL BE 36" WIDE AND SHALL EXTEND THE FULL LENGTH OF THE VEHICLE PULL-UP SPACES.

13. ACCESSIBLE ROUTES SHALL BE 36" WIDE AND SHALL EXTEND THE FULL LENGTH OF THE VEHICLE PULL-UP SPACES.



NOTES:

1. THE INTERNATIONAL SYMBOL OF ACCESSIBILITY SHALL BE THE STANDARD USED TO IDENTIFY FACILITIES THAT ARE ACCESSIBLE TO AND USED BY PHYSICALLY HANDICAPPED PERSONS. THE SYMBOL SHALL CONSIST OF A WHITE FIGURE ON A BLUE BACKGROUND. THE BLUE SHALL BE EQUAL TO COLOR NO. 15050 IN FEDERAL STANDARD COLOR SPECIFICATIONS.

2. CHARACTERS AND SYMBOLS SHALL CONTRAST WITH THEIR BACKGROUND. OTHER LIGHT CHARACTERS OR LINE BACKGROUNDS OF DARK CHARACTERS ON LIGHT BACKGROUND SHALL BE USED TO IDENTIFY FACILITIES.

3. IDENTIFICATION SIGNS SHALL BE VISIBLE FROM EACH PARKING SPACE, FORWARD OR REVERSE, TO A SIGN AT THE INTERIOR OF THE SPACE.

4. AT EACH PARKING SPACE, THERE SHALL BE A "VAN ACCESSIBLE" SIGN, 36" X 48" MIN. HIGH, WITH THE FOLLOWING INFORMATION:

5. AT EACH PARKING SPACE, THERE SHALL BE A "VAN ACCESSIBLE" SIGN, 36" X 48" MIN. HIGH, WITH THE FOLLOWING INFORMATION:

6. AT EACH PARKING SPACE, THERE SHALL BE A "VAN ACCESSIBLE" SIGN, 36" X 48" MIN. HIGH, WITH THE FOLLOWING INFORMATION:

7. AT EACH PARKING SPACE, THERE SHALL BE A "VAN ACCESSIBLE" SIGN, 36" X 48" MIN. HIGH, WITH THE FOLLOWING INFORMATION:

8. AT EACH PARKING SPACE, THERE SHALL BE A "VAN ACCESSIBLE" SIGN, 36" X 48" MIN. HIGH, WITH THE FOLLOWING INFORMATION:

9. AT EACH PARKING SPACE, THERE SHALL BE A "VAN ACCESSIBLE" SIGN, 36" X 48" MIN. HIGH, WITH THE FOLLOWING INFORMATION:

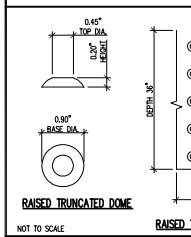
10. AT EACH PARKING SPACE, THERE SHALL BE A "VAN ACCESSIBLE" SIGN, 36" X 48" MIN. HIGH, WITH THE FOLLOWING INFORMATION:

11. AT EACH PARKING SPACE, THERE SHALL BE A "VAN ACCESSIBLE" SIGN, 36" X 48" MIN. HIGH, WITH THE FOLLOWING INFORMATION:

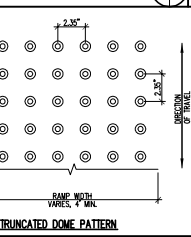
12. AT EACH PARKING SPACE, THERE SHALL BE A "VAN ACCESSIBLE" SIGN, 36" X 48" MIN. HIGH, WITH THE FOLLOWING INFORMATION:

13. AT EACH PARKING SPACE, THERE SHALL BE A "VAN ACCESSIBLE" SIGN, 36" X 48" MIN. HIGH, WITH THE FOLLOWING INFORMATION:

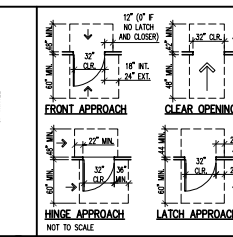
ACCESSIBLE ROUTES



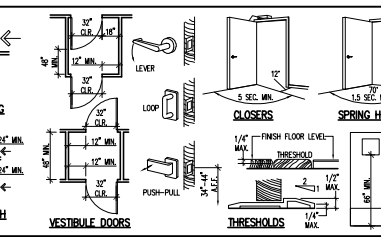
PARKING STALLS



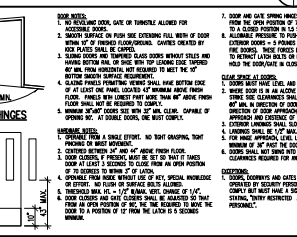
DOORS



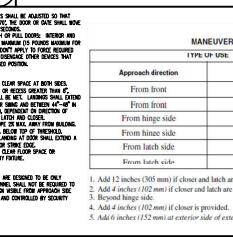
TOILET ACCOMMODATIONS



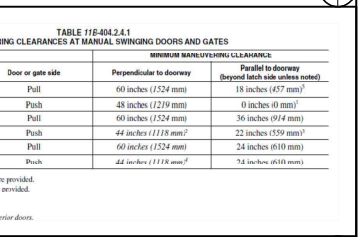
TOILET ACCESSORIES



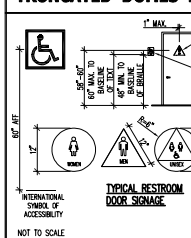
LAVATORIES



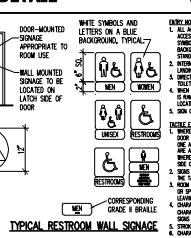
REACH RANGES



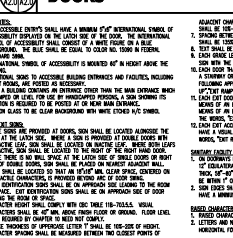
TRUNCATED DOMES DETAIL



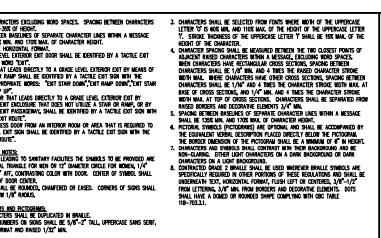
DOORS



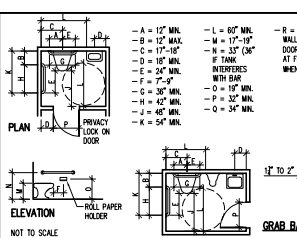
TOILET ACCOMMODATIONS



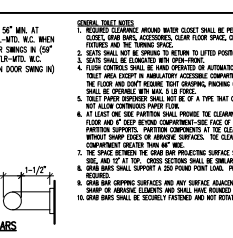
TOILET ACCESSORIES



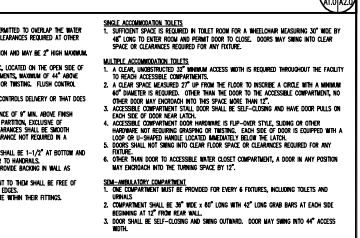
LAVATORIES



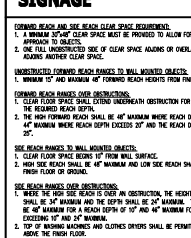
REACH RANGES



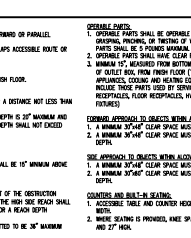
TRUNCATED DOMES DETAIL



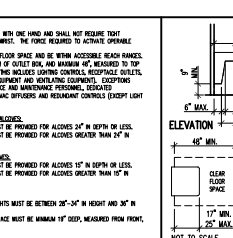
SIGNAGE



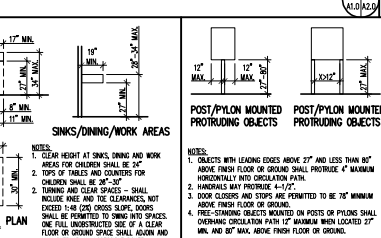
DOORS



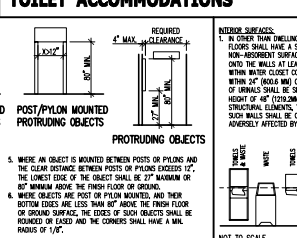
TOILET ACCOMMODATIONS



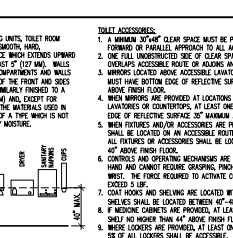
TOILET ACCESSORIES



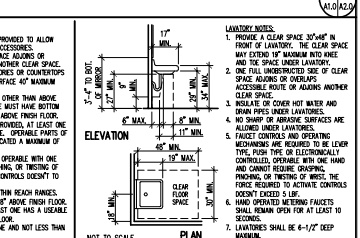
LAVATORIES



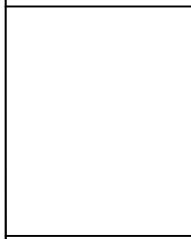
REACH RANGES



TRUNCATED DOMES DETAIL



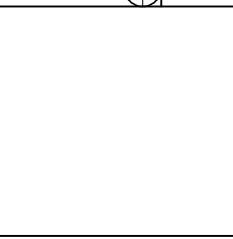
REACH RANGES



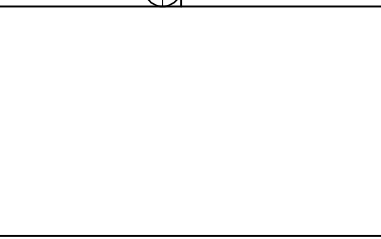
DOORS



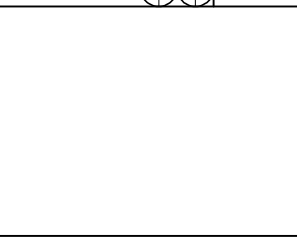
TOILET ACCOMMODATIONS



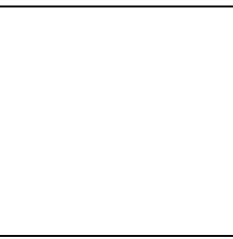
TOILET ACCESSORIES



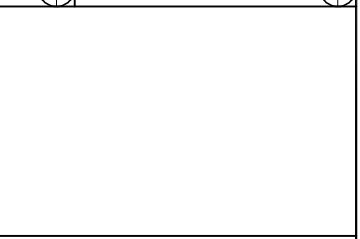
LAVATORIES



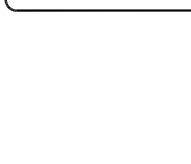
REACH RANGES



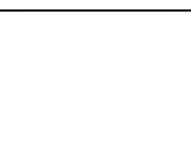
TRUNCATED DOMES DETAIL



SIGNAGE



DOORS



TOILET ACCOMMODATIONS



TOILET ACCESSORIES



LAVATORIES



REACH RANGES



TRUNCATED DOMES DETAIL



SIGNAGE



DOORS



TOILET ACCOMMODATIONS



TOILET ACCESSORIES



LAVATORIES



REACH RANGES



TRUNCATED DOMES DETAIL



SIGNAGE



DOORS



TOILET ACCOMMODATIONS



TOILET ACCESSORIES



LAVATORIES



REACH RANGES



TRUNCATED DOMES DETAIL



SIGNAGE



DOORS



TOILET ACCOMMODATIONS



TOILET ACCESSORIES

