

PARRON HALL

Proposal

Order Number	63478
Date	09/05/2023
Customer PO No	
Customer Acct	CITYLAN
Salesperson	Kay Boyce
Project Number	7231
Terms	NET 10
Page	1 of 29

9655 Granite Ridge Dr., Suite 100
San Diego, CA 92123

T City of Lancaster
O 44933 N Fern Ave
Lancaster, CA 93534

ATTN: ACCOUNTS PAYABLE courtney
Phone: 661-723-5963
Email: accountspayable@cityoflanasterca.gov

S City of Lancaster
H 44933 N Fern Ave
I Lancaster, CA 93534
P

T ATTN: Alexis Merino
O Phone: 661/917-7187
Email: amerino@cityoflanasterca.gov

Salesperson: Kay Boyce, Phone: 858-737-1126, Cell: 619-977-4016, kboyce@parronhall.com

Line	Quantity	Description	Unit Price	Extended Amount
1	1.00 Each	Lock Core Kit Silver - 1 Core 2 Keys \$(KEYNUM):Key Number .X119:Key Number 119 .1:1 Tag: FLR1_#01_KEYS ALS	8.41	8.41
2	1.00 Each	Lock Core Kit Silver - 1 Core 2 Keys \$(KEYNUM):Key Number .X120:Key Number 120 .1:1 Tag: FLR1_#01_KEYS ALS	8.41	8.41
3	1.00 Each	Lock Core Kit Silver - 1 Core 2 Keys \$(KEYNUM):Key Number .X149:Key Number 149 .1:1 Tag: FLR1_#01_KEYS ALS	8.41	8.41
4	1.00 Each	Lock Core Kit Silver - 1 Core 2 Keys \$(KEYNUM):Key Number .X155:Key Number 155 .1:1 Tag: FLR1_#01_KEYS ALS	8.41	8.41
5	1.00 Each	Lock Core Kit Silver - 1 Core 2 Keys \$(KEYNUM):Key Number .X170:Key Number 170 .1:1 Tag: FLR1_#01_KEYS ALS	8.41	8.41
6	1.00 Each	Lock Core Kit Silver - 1 Core 2 Keys \$(KEYNUM):Key Number .X186:Key Number 186 .1:1 Tag: FLR1_#01_KEYS ALS	8.41	8.41

PARRON HALL

Proposal

Order Number	63478
Date	09/05/2023
Customer PO No	
Customer Acct	CITYLAN
Salesperson	Kay Boyce
Project Number	7231
Terms	NET 10
Page	2 of 29

9655 Granite Ridge Dr., Suite 100
San Diego, CA 92123

7	1.00 Each	Lock Core Kit Silver - 1 Core 2 Keys \$(KEYNUM):Key Number .X190:Key Number 190 .1:1 Tag: FLR1_#01_KEYS ALS	8.41	8.41
8	1.00 Each	Lock Core Kit Silver - 1 Core 2 Keys \$(KEYNUM):Key Number .X225:Key Number 225 .1:1 Tag: FLR1_#01_KEYS ALS	8.41	8.41
9	1.00 Each	Lock Core Kit Silver - 1 Core 2 Keys \$(KEYNUM):Key Number .X121:Key Number 121 .1:1 Tag: FLR1_#01_KEYS ALS	8.41	8.41
10	1.00 Each	Lock Core Kit Silver - 1 Core 2 Keys \$(KEYNUM):Key Number .X122:Key Number 122 .1:1 Tag: FLR1_#01_KEYS ALS	8.41	8.41
11	1.00 Each	Lock Core Kit Silver - 1 Core 2 Keys \$(KEYNUM):Key Number .X131:Key Number 131 .1:1 Tag: FLR1_#01_KEYS ALS	8.41	8.41
12	1.00 Each	Lock Core Kit Silver - 1 Core 2 Keys \$(KEYNUM):Key Number .X132:Key Number 132 .1:1 Tag: FLR1_#01_KEYS ALS	8.41	8.41
13	1.00 Each	Lock Core Kit Silver - 1 Core 2 Keys \$(KEYNUM):Key Number .X133:Key Number 133 .1:1 Tag: FLR1_#01_KEYS ALS	8.41	8.41
14	1.00 Each	Lock Core Kit Silver - 1 Core 2 Keys \$(KEYNUM):Key Number .X162:Key Number 162 .1:1 Tag: FLR1_#01_KEYS ALS	8.41	8.41

PARRON HALL

Proposal

Order Number	63478
Date	09/05/2023
Customer PO No	
Customer Acct	CITYLAN
Salesperson	Kay Boyce
Project Number	7231
Terms	NET 10
Page	3 of 29

9655 Granite Ridge Dr., Suite 100
San Diego, CA 92123

15	1.00 Each	Lock Core Kit Silver - 1 Core 2 Keys \$(KEYNUM):Key Number .X163:Key Number 163 .1:1 Tag: FLR1_#01_KEYS ALS	8.41	8.41
16	1.00 Each	Lock Core Kit Silver - 1 Core 2 Keys \$(KEYNUM):Key Number .X164:Key Number 164 .1:1 Tag: FLR1_#01_KEYS ALS	8.41	8.41
17	1.00 Each	Lock Core Kit Silver - 1 Core 2 Keys \$(KEYNUM):Key Number .X165:Key Number 165 .1:1 Tag: FLR1_#01_KEYS ALS	8.41	8.41
18	1.00 Each	Lock Core Kit Silver - 1 Core 2 Keys \$(KEYNUM):Key Number .X166:Key Number 166 .1:1 Tag: FLR1_#01_KEYS ALS	8.41	8.41
19	1.00 Each	Lock Core Kit Silver - 1 Core 2 Keys \$(KEYNUM):Key Number .X167:Key Number 167 .1:1 Tag: FLR1_#01_KEYS ALS	8.41	8.41
20	1.00 Each	Lock Core Kit Silver - 1 Core 2 Keys \$(KEYNUM):Key Number .X191:Key Number 191 .1:1 Tag: FLR1_#01_KEYS ALS	8.41	8.41
21	1.00 Each	Lock Core Kit Silver - 1 Core 2 Keys \$(KEYNUM):Key Number .X123:Key Number 123 .1:1 Tag: FLR1_#01_KEYS ALS	8.41	8.41
22	1.00 Each	Lock Core Kit Silver - 1 Core 2 Keys \$(KEYNUM):Key Number .X124:Key Number 124 .1:1 Tag: FLR1_#01_KEYS ALS	8.41	8.41

PARRON HALL

Proposal

Order Number	63478
Date	09/05/2023
Customer PO No	
Customer Acct	CITYLAN
Salesperson	Kay Boyce
Project Number	7231
Terms	NET 10
Page	4 of 29

9655 Granite Ridge Dr., Suite 100
San Diego, CA 92123

23	1.00 Each	Lock Core Kit Silver - 1 Core 2 Keys \$(KEYNUM):Key Number .X125:Key Number 125 .1:1 Tag: FLR1_#01_KEYS ALS	8.41	8.41
24	1.00 Each	Lock Core Kit Silver - 1 Core 2 Keys \$(KEYNUM):Key Number .X130:Key Number 130 .1:1 Tag: FLR1_#01_KEYS ALS	8.41	8.41
25	1.00 Each	Lock Core Kit Silver - 1 Core 2 Keys \$(KEYNUM):Key Number .X168:Key Number 168 .1:1 Tag: FLR1_#01_KEYS ALS	8.41	8.41
26	1.00 Each	Lock Core Kit Silver - 1 Core 2 Keys \$(KEYNUM):Key Number .X169:Key Number 169 .1:1 Tag: FLR1_#01_KEYS ALS	8.41	8.41
27	1.00 Each	Lock Core Kit Silver - 1 Core 2 Keys \$(KEYNUM):Key Number .X134:Key Number 134 .1:1 Tag: FLR1_#01_KEYS ALS	8.41	8.41
28	1.00 Each	Lock Core Kit Silver - 1 Core 2 Keys \$(KEYNUM):Key Number .SEQ/:Key Number Sequence Start 101:Key Number 101 .17:17 Tag: FLR1_#01_KEYS ALS	109.62	109.62
29	1.00 Each	Lock Core Kit Silver - 1 Core 2 Keys \$(KEYNUM):Key Number .SEQ/:Key Number Sequence Start 126:Key Number 126 .4:4 Tag: FLR1_#01_KEYS ALS	27.55	27.55

PARRON HALL

Proposal

Order Number	63478
Date	09/05/2023
Customer PO No	
Customer Acct	CITYLAN
Salesperson	Kay Boyce
Project Number	7231
Terms	NET 10
Page	5 of 29

9655 Granite Ridge Dr., Suite 100
San Diego, CA 92123

30	1.00 Each	Lock Core Kit Silver - 1 Core 2 Keys \$(KEYNUM):Key Number .SEQ/:Key Number Sequence Start 135:Key Number 135 .2:2 Tag: FLR1_#01_KEYS ALS	14.79	14.79
31	1.00 Each	Lock Core Kit Silver - 1 Core 2 Keys \$(KEYNUM):Key Number .SEQ/:Key Number Sequence Start 137:Key Number 137 .5:5 Tag: FLR1_#01_KEYS ALS	33.93	33.93
32	1.00 Each	Lock Core Kit Silver - 1 Core 2 Keys \$(KEYNUM):Key Number .SEQ/:Key Number Sequence Start 142:Key Number 142 .7:7 Tag: FLR1_#01_KEYS ALS	46.40	46.40
33	1.00 Each	Lock Core Kit Silver - 1 Core 2 Keys \$(KEYNUM):Key Number .SEQ/:Key Number Sequence Start 150:Key Number 150 .5:5 Tag: FLR1_#01_KEYS ALS	33.93	33.93
34	1.00 Each	Lock Core Kit Silver - 1 Core 2 Keys \$(KEYNUM):Key Number .SEQ/:Key Number Sequence Start 156:Key Number 156 .6:6 Tag: FLR1_#01_KEYS ALS	40.02	40.02
35	1.00 Each	Lock Core Kit Silver - 1 Core 2 Keys \$(KEYNUM):Key Number .SEQ/:Key Number Sequence Start 171:Key Number 171 .7:7 Tag: FLR1_#01_KEYS ALS	46.40	46.40

PARRON HALL

Proposal

Order Number	63478
Date	09/05/2023
Customer PO No	
Customer Acct	CITYLAN
Salesperson	Kay Boyce
Project Number	7231
Terms	NET 10
Page	6 of 29

9655 Granite Ridge Dr., Suite 100
San Diego, CA 92123

36	1.00 Each	Lock Core Kit Silver - 1 Core 2 Keys \$(KEYNUM):Key Number .SEQ/:Key Number Sequence Start 178:Key Number 178 .8:8 Tag: FLR1_#01_KEYS ALS	52.78	52.78
37	1.00 Each	Lock Core Kit Silver - 1 Core 2 Keys \$(KEYNUM):Key Number .SEQ/:Key Number Sequence Start 187:Key Number 187 .3:3 Tag: FLR1_#01_KEYS ALS	21.17	21.17
38	6.00 Each	Ess Lat 42W 28H 2-12" Drws Bev Pull \$(P1):P1 Paint Opts .P8R:Pebble .OMT:omt Core to Ord key Alike Tag: FLR1_#02_STORAGE ALS	651.70	3,910.20
39	3.00 Each	Stor Isla Top 84Wx18D S1 .X:Non-FSC Wood \$(L1STD):Grd L1 Standard Laminates .LFW1:Florence Walnut .FW:Florence Walnut Tag: FLR1_#02_STORAGE ALS	205.80	617.40
40	2.00 Each	Lock Core Kit Silver - 3 Cores 2 Keys \$(KEYNUM):Key Number .X108:Key Number 108 .1:1 Tag: FLR1_#02_STORAGE ALS	25.52	51.04
41	2.00 Each	CUSTOM Ter DNA Base Pass-Thru Shroud 22.5Hx24W .M456012:24"W 22 1/2"H Pass-ThruTrimKit \$(P1):P1 Paint Opts .P8R:Pebble Tag: FLR1_#03_RM 106 ALS	143.26	286.52
42	6.00 Each	CUST SYST LAM WS w/GROM, FRONT TO BACK WOODGRAIN .M591782:Enter Custom "M" Number \$(L1STD):Grd L1 Standard Laminates .LFW1:Florence Walnut .FW:Florence Walnut .P:Plastic Grommet Tag: FLR1_#03_RM 106 ALS	182.12	1,092.72

PARRON HALL

Proposal

Order Number	63478
Date	09/05/2023
Customer PO No	
Customer Acct	CITYLAN
Salesperson	Kay Boyce
Project Number	7231
Terms	NET 10
Page	7 of 29

9655 Granite Ridge Dr., Suite 100
San Diego, CA 92123

43	6.00 Each	Tool Box Pencil & CD Holder \$(P1):P1 Paint Opts .P8R:Pebble Tag: FLR1_#03_RM 106 ALS	29.58	177.48
44	12.00 Each	Mail Box \$(P1):P1 Paint Opts .P8R:Pebble Tag: FLR1_#03_RM 106 ALS	37.12	445.44
45	6.00 Each	Paper Wave \$(P1):P1 Paint Opts .P8R:Pebble Tag: FLR1_#03_RM 106 ALS	53.07	318.42
46	2.00 Each	Pass-Thru Cable w/o Power Block 24W .P:Black Tag: FLR1_#03_RM 106 ALS	61.48	122.96
47	2.00 Each	Pass-Thru Cable w/o Power Block 36W .P:Black Tag: FLR1_#03_RM 106 ALS	61.48	122.96
48	4.00 Each	Pass-Thru Cable w/o Power Block 48W .P:Black Tag: FLR1_#03_RM 106 ALS	64.38	257.52
49	2.00 Each	Power Harness 24W .P:Black Tag: FLR1_#03_RM 106 ALS	109.91	219.82
50	6.00 Each	Power Harness 30W .P:Black Tag: FLR1_#03_RM 106 ALS	109.91	659.46
51	2.00 Each	Power Harness 36W .P:Black Tag: FLR1_#03_RM 106 ALS	109.91	219.82
52	4.00 Each	Power Harness 48W .P:Black Tag: FLR1_#03_RM 106 ALS	116.87	467.48

PARRON HALL

Proposal

Order Number	63478
Date	09/05/2023
Customer PO No	
Customer Acct	CITYLAN
Salesperson	Kay Boyce
Project Number	7231
Terms	NET 10
Page	8 of 29

9655 Granite Ridge Dr., Suite 100
San Diego, CA 92123

53	9.00 Each	Ter/2.6/Align Duplex Receptacle Circuit 1 .EV:Loft Tag: FLR1_#03_RM 106 ALS	20.01	180.09
54	9.00 Each	Ter/2.6/Align Duplex Receptacle Circuit 2 .EV:Loft Tag: FLR1_#03_RM 106 ALS	20.01	180.09
55	6.00 Each	Ter/2.6/Align Duplex Receptacle Circuit 3 .EV:Loft Tag: FLR1_#03_RM 106 ALS	20.01	120.06
56	2.00 Each	Base Infeed 6'Sealtight Cable .P:Black Tag: FLR1_#03_RM 106 ALS	123.54	247.08
57	2.00 Each	Structural Raceway Pnl Fr-No Top Trim 42 1/2Hx24W \$(P1):P1 Paint Opts .P8R:Pebble Tag: FLR1_#03_RM 106 ALS	113.39	226.78
58	3.00 Each	Structural Raceway Pnl Fr-No Top Trim 42 1/2Hx30W \$(P1):P1 Paint Opts .P8R:Pebble Tag: FLR1_#03_RM 106 ALS	119.77	359.31
59	2.00 Each	Structural Raceway Pnl Fr-No Top Trim 42 1/2Hx36W \$(P1):P1 Paint Opts .P8R:Pebble Tag: FLR1_#03_RM 106 ALS	124.99	249.98
60	3.00 Each	Structural Raceway Pnl Fr-No Top Trim 42 1/2Hx48W \$(P1):P1 Paint Opts .P8R:Pebble Tag: FLR1_#03_RM 106 ALS	134.85	404.55
61	1.00 Each	Structural Raceway Pnl Fr-No Top Trim 50Hx24W \$(P1):P1 Paint Opts .P8R:Pebble Tag: FLR1_#03_RM 106 ALS	121.80	121.80
62	8.00 Each	Structural Raceway Pnl Fr-No Top Trim 50Hx30W \$(P1):P1 Paint Opts .P8R:Pebble Tag: FLR1_#03_RM 106 ALS	129.05	1,032.40

PARRON HALL

Proposal

Order Number	63478
Date	09/05/2023
Customer PO No	
Customer Acct	CITYLAN
Salesperson	Kay Boyce
Project Number	7231
Terms	NET 10
Page	9 of 29

9655 Granite Ridge Dr., Suite 100
San Diego, CA 92123

63	2.00 Each	Structural Raceway Pnl Fr-No Top Trim 50Hx36W \$(P1):P1 Paint Opts .P8R:Pebble Tag: FLR1_#03_RM 106 ALS	131.95	263.90
64	3.00 Each	Structural Raceway Pnl Fr-No Top Trim 50Hx48W \$(P1):P1 Paint Opts .P8R:Pebble Tag: FLR1_#03_RM 106 ALS	140.94	422.82
65	4.00 Each	High/Low Flat Connector Kit - 7"H \$(P1):P1 Paint Opts .P8R:Pebble Tag: FLR1_#03_RM 106 ALS	27.26	109.04
66	2.00 Each	E End Trim Flat ConnKit - 42"H base panel \$(P1):P1 Paint Opts .P8R:Pebble Tag: FLR1_#03_RM 106 ALS	35.96	71.92
67	4.00 Each	L 90-degree Flat ConnKit - 42"H base panel \$(P1):P1 Paint Opts .P8R:Pebble Tag: FLR1_#03_RM 106 ALS	66.70	266.80
68	2.00 Each	T 3-way Flat Connector Kit - 42"H base panel \$(P1):P1 Paint Opts .P8R:Pebble Tag: FLR1_#03_RM 106 ALS	66.70	133.40
69	1.00 Each	E End Trim Flat ConnKit - 50"H base panel \$(P1):P1 Paint Opts .P8R:Pebble Tag: FLR1_#03_RM 106 ALS	40.89	40.89
70	6.00 Each	L 90-degree Flat ConnKit - 50"H base panel \$(P1):P1 Paint Opts .P8R:Pebble Tag: FLR1_#03_RM 106 ALS	69.60	417.60
71	2.00 Each	T 3-way Flat Connector Kit - 50"H base panel \$(P1):P1 Paint Opts .P8R:Pebble Tag: FLR1_#03_RM 106 ALS	69.60	139.20

PARRON HALL

Proposal

Order Number	63478
Date	09/05/2023
Customer PO No	
Customer Acct	CITYLAN
Salesperson	Kay Boyce
Project Number	7231
Terms	NET 10
Page	10 of 29

9655 Granite Ridge Dr., Suite 100
San Diego, CA 92123

72	3.00 Each	7-1/2H x 24 W Flat Glass Panel Mntd Screen .LC:Clear Glass \$(P1):P1 Paint Opts .P8R:Pebble Tag: FLR1_#03_RM 106 ALS	178.93	536.79
73	5.00 Each	7-1/2H x 30 W Flat Glass Panel Mntd Screen .LC:Clear Glass \$(P1):P1 Paint Opts .P8R:Pebble Tag: FLR1_#03_RM 106 ALS	192.56	962.80
74	3.00 Each	Ter Tool Tile 7.5H x 48W \$(P1):P1 Paint Opts .P8R:Pebble Tag: FLR1_#03_RM 106 ALS	150.51	451.53
75	4.00 Each	7-1/2H x 72 W Flat Glass Panel Mntd Screen .LC:Clear Glass \$(P1):P1 Paint Opts .P8R:Pebble Tag: FLR1_#03_RM 106 ALS	365.11	1,460.44
76	6.00 Each	7-1/2H x 78 W Flat Glass Panel Mntd Screen .LC:Clear Glass \$(P1):P1 Paint Opts .P8R:Pebble Tag: FLR1_#03_RM 106 ALS	393.24	2,359.44
77	3.00 Each	Ter Tool Tile 15H x 48W \$(P1):P1 Paint Opts .P8R:Pebble Tag: FLR1_#03_RM 106 ALS	162.69	488.07
78	4.00 Each	Flat Steel Tile 7.5H x 24W \$(P1):P1 Paint Opts .P8R:Pebble Tag: FLR1_#03_RM 106 ALS	44.08	176.32
79	3.00 Each	Flat Steel Tile 7.5H x 30W \$(P1):P1 Paint Opts .P8R:Pebble Tag: FLR1_#03_RM 106 ALS	45.53	136.59

PARRON HALL

Proposal

Order Number	63478
Date	09/05/2023
Customer PO No	
Customer Acct	CITYLAN
Salesperson	Kay Boyce
Project Number	7231
Terms	NET 10
Page	11 of 29

9655 Granite Ridge Dr., Suite 100
San Diego, CA 92123

80	2.00 Each	Flat Steel Tile 7.5H x 36W \$(P1):P1 Paint Opts .P8R:Pebble Tag: FLR1_#03_RM 106 ALS	49.88	99.76
81	3.00 Each	Flat Steel Tile 7.5H x 48W \$(P1):P1 Paint Opts .P8R:Pebble Tag: FLR1_#03_RM 106 ALS	58.58	175.74
82	2.00 Each	Ter Tackable Acoustic Tile 15H x 24W \$(A):GRD A FAB .REF:Reflections 924:Stainless Tag: FLR1_#03_RM 106 ALS	33.06	66.12
83	8.00 Each	Flat Steel Tile 15H x 30W \$(P1):P1 Paint Opts .P8R:Pebble Tag: FLR1_#03_RM 106 ALS	47.56	380.48
84	3.00 Each	Flat Steel Tile 15H x 48W \$(P1):P1 Paint Opts .P8R:Pebble Tag: FLR1_#03_RM 106 ALS	62.06	186.18
85	2.00 Each	Ter Tackable Acoustic Tile 22.5H x 24W \$(A):GRD A Fab .REF:Reflections 924:Stainless Tag: FLR1_#03_RM 106 ALS	41.47	82.94
86	2.00 Each	Flat Steel Tile 30H x 24W \$(P1):P1 Paint Opts .P8R:Pebble Tag: FLR1_#03_RM 106 ALS	66.12	132.24
87	11.00 Each	Flat Steel Tile 30H x 30W \$(P1):P1 Paint Opts .P8R:Pebble Tag: FLR1_#03_RM 106 ALS	72.79	800.69
88	2.00 Each	Flat Steel Tile 30H x 36W \$(P1):P1 Paint Opts .P8R:Pebble Tag: FLR1_#03_RM 106 ALS	82.07	164.14

PARRON HALL

Proposal

Order Number	63478
Date	09/05/2023
Customer PO No	
Customer Acct	CITYLAN
Salesperson	Kay Boyce
Project Number	7231
Terms	NET 10
Page	12 of 29

9655 Granite Ridge Dr., Suite 100
San Diego, CA 92123

89	6.00 Each	Flat Steel Tile 30H x 48W \$(P1):P1 Paint Opts .P8R:Pebble Tag: FLR1_#03_RM 106 ALS	97.44	584.64
90	6.00 Each	Ter Tackable Acoustic Tile 30H x 48W \$(A):GRD A FAB .REF:Reflections 924:Stainless Tag: FLR1_#03_RM 106 ALS	64.38	386.28
91	2.00 Each	Ter Tackable Acoustic Tile 42H x 24W \$(A):GRD A FAB .REF:Reflections 924:Stainless Tag: FLR1_#03_RM 106 ALS	58.29	116.58
92	3.00 Each	Ter Tackable Acoustic Tile 42H x 30W \$(A):GRD A FAB .REF:Reflections 924:Stainless Tag: FLR1_#03_RM 106 ALS	66.12	198.36
93	2.00 Each	Ter Tackable Acoustic Tile 42H x 36W \$(A):GRD A FAB .REF:Reflections 924:Stainless Tag: FLR1_#03_RM 106 ALS	73.08	146.16
94	2.00 Each	Ter Tackable Acoustic Tile 50H x 24W \$(A):GRD A FAB .REF:Reflections 924:Stainless Tag: FLR1_#03_RM 106 ALS	66.12	132.24
95	8.00 Each	Ter Tackable Acoustic Tile 50H x 30W \$(A):GRD A FAB .REF:Reflections 924:Stainless Tag: FLR1_#03_RM 106 ALS	75.69	605.52
96	4.00 Each	Ter Tackable Acoustic Tile 50H x 36W \$(A):GRD A FAB .REF:Reflections 924:Stainless Tag: FLR1_#03_RM 106 ALS	89.03	356.12

PARRON HALL

Proposal

Order Number	63478
Date	09/05/2023
Customer PO No	
Customer Acct	CITYLAN
Salesperson	Kay Boyce
Project Number	7231
Terms	NET 10
Page	13 of 29

9655 Granite Ridge Dr., Suite 100
San Diego, CA 92123

97	8.00 Each	Ter 24W Segment Kit Tag: FLR1_#03_RM 106 ALS	8.99	71.92
98	11.00 Each	Ter 30W Segment Kit Tag: FLR1_#03_RM 106 ALS	8.99	98.89
99	2.00 Each	Ter 36W Segment Kit Tag: FLR1_#03_RM 106 ALS	9.28	18.56
100	14.00 Each	Ter 48W Segment Kit Tag: FLR1_#03_RM 106 ALS	11.02	154.28
101	2.00 Each	Evo Task Mesh High Back Chair 4D Adj Arms no FC .TI:Titanium .L:Lustre .L:Yes .2:Standard .TI:Titanium .T:Titanium Multi-Surface \$(1):Grd 1 Uph .UR:Contourett 19:Graphite .TC00:Coordinating Tag: FLR1_#03_RM 106 ALS	742.14	1,484.28
102	1.00 Each	Lock Core Kit Silver - 2 Cores 2 Keys \$(KEYNUM):Key Number .SEQ/:Key Number Sequence Start 112:Key Number 112 .2:2 Tag: FLR1_#03_RM 106 ALS	29.87	29.87
103	2.00 Each	Seat cushion for metal mobile pedestal 24"D \$(3):GRD 3 UPH .PRKR:Parker 22:Nightfall Tag: FLR1_#03_RM 106 ALS	96.57	193.14
104	2.00 Each	Align Ped 21x15x24 BF MetFront Mobile .S:Square EL:Matte Silver \$(P1):P1 Paint Opts .P8R:Pebble \$(MATCH):Match Case .NA:Match Case .X:Omit Lock Tag: FLR1_#03_RM 106 ALS	283.62	567.24

PARRON HALL

Proposal

Order Number	63478
Date	09/05/2023
Customer PO No	
Customer Acct	CITYLAN
Salesperson	Kay Boyce
Project Number	7231
Terms	NET 10
Page	14 of 29

9655 Granite Ridge Dr., Suite 100
San Diego, CA 92123

105	2.00 Each	Align Ped 28x15x24 FF MetFront Plinth .BK:Flush Plinth .S:Square EL:Matte Silver \$(P1):P1 Paint Opts .P8R:Pebble \$(MATCH):Match Case .NA:Match Case .X:Omit Lock Tag: FLR1_#03_RM 106 ALS	334.95	669.90
106	24.00 Each	Horizontal Straight Pull (9" W) Tag: FLR1_#03_RM 106 Z	17.23	413.52
107	2.00 Each	A6 3 Stage 2 Leg Rectangle T Foot \$(P1):P1 Paint Opts .P8L:Nickel .X:Standard Glide .MEM:Memory Preset Tag: FLR1_#03_RM 106 ALS	679.18	1,358.36
108	2.00 Each	72Wx30D Rect Lam Flat Edge Single Surface \$(L1STD):Grd L1 Standard Laminates .LFW1:Florence Walnut .FW:Florence Walnut .G0:No Grommet Tag: FLR1_#03_RM 106 ALS	289.13	578.26
109	6.00 Each	Worksurface Bracket Kit \$(P1):P1 Paint Opts .P8R:Pebble Tag: FLR1_#03_RM 106 ALS	20.30	121.80
110	3.00 Each	Cantilever Bracket 24D LH Terrace \$(P1):P1 Paint Opts .P8R:Pebble Tag: FLR1_#03_RM 106 ALS	23.49	70.47
111	3.00 Each	Cantilever Bracket 24D RH Terrace \$(P1):P1 Paint Opts .P8R:Pebble Tag: FLR1_#03_RM 106 ALS	23.49	70.47
112	2.00 Each	Cord Manager Spine GRY:Gray Tag: FLR1_#03_RM 106 Z	36.90	73.80

PARRON HALL

Proposal

Order Number	63478
Date	09/05/2023
Customer PO No	
Customer Acct	CITYLAN
Salesperson	Kay Boyce
Project Number	7231
Terms	NET 10
Page	15 of 29

9655 Granite Ridge Dr., Suite 100
San Diego, CA 92123

113	2.00 Each	Evolve Series Dual Monitor Arm w/DC & GM, Fixed + Motion Arms SLV:Silver Tag: FLR1_#03_RM 106 Z	419.40	838.80
114	2.00 Each	Desktop Power Module Including 14" 6-Outlet Power Adapter, (2) AC Power And (1) USB-A Outlet, (1) USB-C Outlet. Mounts On Top Or Under Desk WHT:White Tag: FLR1_#03_RM 106 Z	205.20	410.40
115	2.00 Each	Cord Management Trough Deluxe 2"- 18" BLK:Black Tag: FLR1_#03_RM 106 Z	18.90	37.80
116	1.00 Each	Approach Bookcase 72H 30Wx15D 1 Fixed-3 Adj Shlvs .X:Standard Wood \$(L1STD):Grd L1 Standard Laminates .LFW1:Florence Walnut FW:Florence Walnut Tag: FLR1_#04_RM 123 ALS	597.40	597.40
117	1.00 Each	Park Lo Side Table .FSC:FSC Mixed Wood \$(P2):P2 Paint Opts .PR8:Silver Texture \$(L1STD):Grd L1 Standard Laminates .LFW1:Florence Walnut .FW:Florence Walnut Tag: FLR1_#05_RM 115 ALS	476.10	476.10
118	1.00 Each	Lock Core Kit Silver - 1 Core 2 Keys \$(KEYNUM):Key Number .X187:Key Number 187 .1:1 Tag: FLR1_#06_CUBE 153-1 ALS	8.41	8.41
119	1.00 Each	Align Ped 28x15x24 FF MetFront Plinth .BK:Flush Plinth .S:Square EL:Matte Silver \$(P1):P1 Paint Opts .P8R:Pebble \$(MATCH):Match Case .NA:Match Case .X:Omit Lock Tag: FLR1_#06_CUBE 153-1 ALS	334.95	334.95

PARRON HALL

Proposal

Order Number	63478
Date	09/05/2023
Customer PO No	
Customer Acct	CITYLAN
Salesperson	Kay Boyce
Project Number	7231
Terms	NET 10
Page	16 of 29

9655 Granite Ridge Dr., Suite 100
San Diego, CA 92123

120	2.00 Each	Horizontal Straight Pull (9" W) Tag: FLR1_#06_CUBE 153-1 Z	17.23	34.46
121	5.00 Each	Ess Lat 36W 28H 2-12" Drws Bev Pull \$(P1):P1 Paint Opts .P8R:Pebble .OMT:omt Core to Ord key Alike Tag: FLR1_#07_RM 154 ALS	561.40	2,807.00
122	1.00 Each	Stor Isla Top 36Wx18D S1 .X:Non-FSC Wood \$(L1STD):Grd L1 Standard Laminates .LFW1:Florence Walnut .FW:Florence Walnut Tag: FLR1_#07_RM 154 ALS	115.50	115.50
123	2.00 Each	Stor Isla Top 72Wx18D S1 .X:Non-FSC Wood \$(L1STD):Grd L1 Standard Laminates .LFW1:Florence Walnut .FW:Florence Walnut Tag: FLR1_#07_RM 154 ALS	156.45	312.90
124	2.00 Each	Lock Core Kit Silver - 3 Cores 2 Keys \$(KEYNUM):Key Number .X109:Key Number 109 .1:1 Tag: FLR1_#07_RM 154 ALS	25.52	51.04
125	2.00 Each	Clarity Guest Arms NOUPH FC .CM20:Flint \$(P1):P1 Paint Grade .P4Q:Carbon .G:Graphite \$(P1):P1 Paint Grade .P4Q:Carbon .5:Return Guest .GLD:Glide Tag: FLR1_#08_RM 174 ALS	623.30	1,246.60

PARRON HALL

Proposal

Order Number	63478
Date	09/05/2023
Customer PO No	
Customer Acct	CITYLAN
Salesperson	Kay Boyce
Project Number	7231
Terms	NET 10
Page	17 of 29

9655 Granite Ridge Dr., Suite 100
San Diego, CA 92123

126	2.00 Each	Clarity Task Arms NOUPH FC .CM20:Flint \$(P1):P1 Paint Grade .P4Q:Carbon .G:Graphite \$(P1):P1 Paint Grade .P4Q:Carbon .2:Standard cylinder \$(P2):P2 Caster/Glide .P4Q:Carbon Tag: FLR1_#08_RM 174 ALS	691.38	1,382.76
127	1.00 Each	Evo Task Mesh High Back Chair 4D Adj Arms no FC .TI:Titanium .L:Lustre .L:Yes .2:Standard .TI:Titanium .T:Titanium Multi-Surface \$(1):Grd 1 Uph .UR:Contourett 19:Graphite .TC00:Coordinating Tag: FLR1_#08_RM 174 ALS	742.14	742.14
128	1.00 Each	Lock Core Kit Silver - 3 Cores 2 Keys \$(KEYNUM):Key Number .X174:Key Number 174 .1:1 Tag: FLR1_#08_RM 174 ALS	25.52	25.52
129	2.00 Each	ALLSTEEL SMALL STRAIGHT PULL FOR WARDROBE DOORS 5.32" :SILVER Tag: FLR1_#08_RM 174 Z X	26.36	52.72
130	1.00 Each	Approach Back Pnl Cred 28Hx30W Full Height .X:Standard Wood \$(L1STD):Grd L1 Standard Laminates .LFW1:Florence Walnut FW:Florence Walnut \$(P1):P1 Paint Opts .P27:Matte Black Tag: FLR1_#08_RM 174 ALS	96.28	96.28
131	1.00 Each	Approach 50lb Counterweight Tag: FLR1_#08_RM 174 ALS	132.82	132.82

PARRON HALL

Proposal

Order Number	63478
Date	09/05/2023
Customer PO No	
Customer Acct	CITYLAN
Salesperson	Kay Boyce
Project Number	7231
Terms	NET 10
Page	18 of 29

9655 Granite Ridge Dr., Suite 100
San Diego, CA 92123

132	1.00 Each	Approach Cred 30Wx24D Multi File w/Trgh .X:Standard Wood \$(L1STD):Grd L1 Standard Laminates .LFW1:Florence Walnut FW:Florence Walnut \$(L1STD):Grd L1 Standard Laminates .LFW1:Florence Walnut FW:Florence Walnut .BP:Bar PR6:Silver .OMT:omt Core to Ord key Alike Tag: FLR1_#08_RM 174 ALS	806.78	806.78
133	1.00 Each	Approach Desk 72W x 36D .X:Standard Wood \$(L1STD):Grd L1 Standard Laminates .LDW1:Designer White 15051 DW:Designer White \$(L1STD):Grd L1 Standard Laminates .LFW1:Florence Walnut FW:Florence Walnut .B:Left and Right S:Square Metal Grommet EL:Matte Silver \$(P2):P2 Paint Opts .PR6:Silver .PR6:Silver .MEM:Memory Preset Tag: FLR1_#08_RM 174 ALS	2,001.00	2,001.00
134	1.00 Each	Approach End Panel Supports 28"H .X:Standard Wood \$(L1STD):Grd L1 Standard Laminates .LFW1:Florence Walnut FW:Florence Walnut Tag: FLR1_#08_RM 174 ALS	163.85	163.85
135	1.00 Each	Approach Cred and Desk Mod. Panel 14Hx60W .X:Standard Wood \$(L1STD):Grd L1 Standard Laminates .LFW1:Florence Walnut FW:Florence Walnut Tag: FLR1_#08_RM 174 ALS	177.77	177.77
136	1.00 Each	Approach Mini Tap Mounting Bracket Tag: FLR1_#08_RM 174 ALS	21.46	21.46

PARRON HALL

Proposal

Order Number	63478
Date	09/05/2023
Customer PO No	
Customer Acct	CITYLAN
Salesperson	Kay Boyce
Project Number	7231
Terms	NET 10
Page	19 of 29

9655 Granite Ridge Dr., Suite 100
San Diego, CA 92123

137	1.00 Each	Approach Mini Tap Power Tag: FLR1_#08_RM 174 ALS	69.60	69.60
138	1.00 Each	Appr Combo 72H 30W 24D Right File File .X:Standard Wood \$(L1STD):Grd L1 Standard Laminates .LFW1:Florence Walnut FW:Florence Walnut \$(L1STD):Grd L1 Standard Laminates .LFW1:Florence Walnut FW:Florence Walnut .BP:Bar PR6:Silver .OMT:omt 2 Cores To Ord key Alike Tag: FLR1_#08_RM 174 ALS	1,566.87	1,566.87
139	1.00 Each	Approach Cred Top 48Wx24D for Use with Trough .X:Standard Wood \$(L1STD):Grd L1 Standard Laminates .LDW1:Designer White 15051 DW:Designer White Tag: FLR1_#08_RM 174 ALS	177.77	177.77
140	1.00 Each	Structure 36" Diameter Round Top Lam SqrEdge .X:Standard Wood \$(L1STD):Grd L1 Standard Laminates .LFW1:Florence Walnut .FW:Florence Walnut Tag: FLR1_#08_RM 174 ALS	220.32	220.32
141	1.00 Each	Structure X Base Med. Seated Height with Glides \$(P2):P2 Paint Grade .PR6:Silver Tag: FLR1_#08_RM 174 ALS	261.36	261.36
142	1.00 Each	Gussets (1 Pr) \$(P1):P1 Paint Opts .P02:Flint Tag: FLR1_#08_RM 174 ALS	49.59	49.59
143	2.00 Each	54W External Supt Channel for 66W W/S Tag: FLR1_#08_RM 174 ALS	35.96	71.92
144	1.00 Each	Evolve Series Dual Monitor Arm w/DC & GM, Fixed Arms SLV:Silver Tag: FLR1_#08_RM 174 Z	284.40	284.40

PARRON HALL

Proposal

Order Number	63478
Date	09/05/2023
Customer PO No	
Customer Acct	CITYLAN
Salesperson	Kay Boyce
Project Number	7231
Terms	NET 10
Page	20 of 29

9655 Granite Ridge Dr., Suite 100
San Diego, CA 92123

145	1.00 Each	Desktop Power Module Including 14" 6-Outlet Power Adapter, (2) AC Power And (1) USB-A Outlet, (1) USB-C Outlet. Mounts On Top Or Under Desk WHT:White Tag: FLR1_#08_RM 174 Z	205.20	205.20
146	1.00 Each	2-2.6"W x 18"L Cord Management Troughs, Quick Install Adhesive BLK:Black Tag: FLR1_#08_RM 174 Z	15.75	15.75
147	2.00 Each	Mail Box \$(P1):P1 Paint Opts .P8R:Pebble Tag: FLR1_#09_CUBE 198-19 ALS	37.12	74.24
148	10.00 Each	Clip Caddy \$(P1):P1 Paint Opts .P8R:Pebble Tag: FLR1_#10_TOOLS ALS	26.39	263.90
149	10.00 Each	Binder Bin \$(P1):P1 Paint Opts .P8R:Pebble Tag: FLR1_#10_TOOLS ALS	37.12	371.20
150	10.00 Each	Tool Box Pencil & CD Holder \$(P1):P1 Paint Opts .P8R:Pebble Tag: FLR1_#10_TOOLS ALS	29.58	295.80
151	10.00 Each	Folder Holder \$(P1):P1 Paint Opts .P8R:Pebble Tag: FLR1_#10_TOOLS ALS	37.99	379.90
152	10.00 Each	Disco 12/31/23 Gripper Clip \$(P1):P1 Paint Opts .P8R:Pebble Tag: FLR1_#10_TOOLS ALS	37.99	379.90
153	10.00 Each	Sidebar Personal Shelf \$(P1):P1 Paint Opts .P8R:Pebble Tag: FLR1_#10_TOOLS ALS	37.99	379.90

PARRON HALL

Proposal

Order Number	63478
Date	09/05/2023
Customer PO No	
Customer Acct	CITYLAN
Salesperson	Kay Boyce
Project Number	7231
Terms	NET 10
Page	21 of 29

9655 Granite Ridge Dr., Suite 100
San Diego, CA 92123

154	10.00 Each	Mail Box \$(P1):P1 Paint Opts .P8R:Pebble Tag: FLR1_#10_TOOLS ALS	37.12	371.20
155	10.00 Each	Paper Wave \$(P1):P1 Paint Opts .P8R:Pebble Tag: FLR1_#10_TOOLS ALS	53.07	530.70
156	10.00 Each	Phone Caddy \$(P1):P1 Paint Opts .P8R:Pebble Tag: FLR1_#10_TOOLS ALS	46.40	464.00
157	4.00 Each	Ess Lat 36W 28H 2-12" Drws Bev Pull \$(P1):P1 Paint Opts .P8R:Pebble .OMT:omt Core to Ord key Alike Tag: FLR2_#01_RM 203 ALS	561.40	2,245.60
158	2.00 Each	Stor Isla Top 72Wx18D S1 .X:Non-FSC Wood \$(L1STD):Grd L1 Standard Laminates .LFW1:Florence Walnut .FW:Florence Walnut Tag: FLR2_#01_RM 203 ALS	156.45	312.90
159	2.00 Each	Lock Core Kit Silver - 2 Cores 2 Keys \$(KEYNUM):Key Number .X203:Key Number 203 .1:1 Tag: FLR2_#01_RM 203 ALS	17.11	34.22
160	4.00 Each	Ess Combination 64-1/4Hx36W File Hinge Drs Bev \$(P1):P1 Paint Opts .P8R:Pebble .OMT:omt 2 Cores To Ord key Alike Tag: FLR2_#02_RM 210 ALS	1,075.55	4,302.20
161	4.00 Each	Ess Lat 36W 64-1/4H 12" R/O 4-12" Drws Bev Pull \$(P1):P1 Paint Opts .P8R:Pebble .OMT:omt Core to Ord key Alike Tag: FLR2_#02_RM 210 ALS	1,144.85	4,579.40

PARRON HALL

Proposal

Order Number	63478
Date	09/05/2023
Customer PO No	
Customer Acct	CITYLAN
Salesperson	Kay Boyce
Project Number	7231
Terms	NET 10
Page	22 of 29

9655 Granite Ridge Dr., Suite 100
San Diego, CA 92123

162	2.00 Each	Lock Core Kit Silver - 3 Cores 2 Keys \$(KEYNUM):Key Number .X310:Key Number 310 .1:1 Tag: FLR2_#02_RM 210 ALS	25.52	51.04
163	4.00 Each	Ess Combination 64-1/4Hx36W File Hinge Drs Bev \$(P1):P1 Paint Opts .P8R:Pebble .OMT:omt 2 Cores To Ord key Alike Tag: FLR2_#03_RM 210A ALS	1,075.55	4,302.20
164	2.00 Each	Ess Lat 36W 28H 2-12" Drws Bev Pull \$(P1):P1 Paint Opts .P8R:Pebble .OMT:omt Core to Ord key Alike Tag: FLR2_#03_RM 210A ALS	561.40	1,122.80
165	1.00 Each	Stor Isla Top 72Wx18D S1 .X:Non-FSC Wood \$(L1STD):Grd L1 Standard Laminates .LFW1:Florence Walnut .FW:Florence Walnut Tag: FLR2_#03_RM 210A ALS	156.45	156.45
166	1.00 Each	Lock Core Kit Silver - 1 Core 2 Keys \$(KEYNUM):Key Number .SEQ/:Key Number Sequence Start 215:Key Number 215 .2:2 Tag: FLR2_#03_RM 210A ALS	14.79	14.79
167	1.00 Each	Lock Core Kit Silver - 2 Cores 2 Keys \$(KEYNUM):Key Number .SEQ/:Key Number Sequence Start 211:Key Number 211 .4:4 Tag: FLR2_#03_RM 210A ALS	55.10	55.10
168	2.00 Each	Essentials 28Hx36W Storage Cabinet Bevel Pull \$(P1):P1 Paint Opts .P8R:Pebble .OMT:omt Core to Ord key Alike Tag: FLR2_#04_RM 210&231 ALS	489.65	979.30

PARRON HALL

Proposal

Order Number	63478
Date	09/05/2023
Customer PO No	
Customer Acct	CITYLAN
Salesperson	Kay Boyce
Project Number	7231
Terms	NET 10
Page	23 of 29

9655 Granite Ridge Dr., Suite 100
San Diego, CA 92123

169	2.00 Each	Stor Isla Top 36Wx18D S1 .X:Non-FSC Wood \$(L1STD):Grd L1 Standard Laminates .LFW1:Florence Walnut .FW:Florence Walnut Tag: FLR2_#04_RM 210&231 ALS	115.50	231.00
170	1.00 Each	Lock Core Kit Silver - 1 Core 2 Keys \$(KEYNUM):Key Number .X104:Key Number 104 .1:1 Tag: FLR2_#04_RM 210&231 ALS	8.41	8.41
171	1.00 Each	Lock Core Kit Silver - 1 Core 2 Keys \$(KEYNUM):Key Number .X153:Key Number 153 .1:1 Tag: FLR2_#04_RM 210&231 ALS	8.41	8.41
172	2.00 Each	GUN Bkcs 5H 30W Wd .X:Standard No FSC \$(V1):Grade 1 Veneer .NT:Natural FC Walnut 579:Florence Walnut Tag: FLR2_#05_RM 217 ALS	1,841.71	3,683.42
173	1.00 Each	Ess Combination 64-1/4Hx30W File Hinge Drs Bev \$(P1):P1 Paint Opts .P8R:Pebble .OMT:omt 2 Cores To Ord key Alike Tag: FLR2_#06_STORAGE ALS	945.35	945.35
174	5.00 Each	Ess Combination 64-1/4Hx36W File Hinge Drs Bev \$(P1):P1 Paint Opts .P8R:Pebble .OMT:omt 2 Cores To Ord key Alike Tag: FLR2_#06_STORAGE ALS	1,075.55	5,377.75
175	1.00 Each	Lock Core Kit Silver - 2 Cores 2 Keys \$(KEYNUM):Key Number .SEQ/:Key Number Sequence Start 180:Key Number 180 .6:6 Tag: FLR2_#06_STORAGE ALS	80.33	80.33

PARRON HALL

Proposal

Order Number	63478
Date	09/05/2023
Customer PO No	
Customer Acct	CITYLAN
Salesperson	Kay Boyce
Project Number	7231
Terms	NET 10
Page	24 of 29

9655 Granite Ridge Dr., Suite 100
San Diego, CA 92123

176	3.00 Each	LOCHLYN,14DX23W,MODULE SHELF,LAMINATE PBH:PORTOBELLO-HORIZONTAL Tag: FLR2_#08_RM 213A Z	80.55	241.65
177	4.00 Each	LOCHLYN,14DX29W,MODULE SHELF,LAMINATE PBH:PORTOBELLO-HORIZONTAL Tag: FLR2_#08_RM 213A Z	87.30	349.20
178	1.00 Each	LOCHLYN,14DX84W,COMPONENT TOP,LAMINATE PBH:PORTOBELLO-HORIZONTAL Tag: FLR2_#08_RM 213A Z	223.65	223.65
179	1.00 Each	LOCHLYN,23WX25H,MODULE BOX,FRONT OPEN,LAMINATE PBH:PORTOBELLO-HORIZONTAL PB:PORTOBELLO Tag: FLR2_#08_RM 213A Z	248.85	248.85
180	3.00 Each	LOCHLYN,29WX25H,MODULE BOX,FRONT OPEN,LAMINATE PBH:PORTOBELLO-HORIZONTAL PB:PORTOBELLO Tag: FLR2_#08_RM 213A Z	264.15	792.45
181	1.00 Each	LOCHLYN,84WX65H,FRAME,STYLE A,METAL 460:STORM Tag: FLR2_#08_RM 213A Z	3,480.75	3,480.75
182	1.00 Each	Evolve Series Dual Monitor Arm w/DC & GM, Fixed + Motion Arms + Sliders SLV:Silver Tag: FLR2_#09_RM 225 Z	509.85	509.85
183	6.00 Each	GUN Calia Guest Single Uph Seat/Back .NE:Natural FC Maple 579:Florence Walnut .U:CTB 117 Flammability Rating \$(L1):Gr L1 Uph .DAV:Davenport 02:Atlantis Tag: FLR2_#10_RM 217 ALS	1,494.50	8,967.00
184	1.00 Lot	SHIPPING/FREIGHT - ESI	245.00	245.00
185	1.00 Lot	SHIPPING/FREIGHT - ALLSTEEL	37.19	37.19
186	1.00 Each	Technical Services and Installation Drawings Tag: z ZZ	2,550.00	2,550.00

PARRON HALL

Proposal

Order Number	63478
Date	09/05/2023
Customer PO No	
Customer Acct	CITYLAN
Salesperson	Kay Boyce
Project Number	7231
Terms	NET 10
Page	25 of 29

9655 Granite Ridge Dr., Suite 100
San Diego, CA 92123

187	1.00 Lot	<p>Labor to Receive at EPI Santa Fe Warehouse: 13707 Marquardt Ave, Santa Fe Springs, CA 90670. C2BD 818-275-9855, ext.1021</p> <p>Deliver to site and install:</p> <p>1st floor</p> <ol style="list-style-type: none"> 1. Receive/deliver 78 keys (39 cores can get thrown out) 2. 6-18D/42W/2 drawer laterals with 3-18x84 laminate tops in hallway outside of office 122 & 123 3. Install 6 workstations into room 106. Some parts new, some parts from 4 stations that were already torn down and parts sitting in room 184 4. New 14/30/72h bookcase to room 123 5. New 24W X 19H round occasional table to room 115 6. Add missing file file support ped below worksurface at cube 153-1 (open office 153) 7. 5-18d/36W 2 drawer lateral files with 2-72 tops and 1-36 laminate top outside IDF storage room 156 8. Storage 174 converting to office. All is new , see drawing 9. Add 2 mail box trays for slat wall to cube 168-19 (open office 168A) 10. Receive/deliver to inventory qty 10 each of work tools for slat tiles (80 pieces total) <ol style="list-style-type: none"> a. 10-mail box b. 10-folder holders c. Phone caddy d. 10-binder bins e. 10-tool box f. 10-clip caddy g. 10-personal shelf h. 10-paper wave i. 10-gripper clip <p>2nd floor</p> <ol style="list-style-type: none"> 1. 4-18D/36W/29H laterals with 2-72 laminate tops to open office 203 2. 6-18d/36w/65 5 drawer laterals outside vault room 206 in open office 210A 3. 4-18d/36w/64h storage cabinet/lf combo & 42-36x2drwr laterals with 72 laminate top outside room 235 in open office 210A 4. 2-ST4 18D/36W/2 drawer lateral file with top outside copy room 236 and one in open office 231B 5. 2-15/30w/68h bookcases in room 217 6. 5-18/36/64h and 1-18x30x64h lateral bookcase combo in hallway near office 223 7. Not used 8. 14d/84w/64h modular bookcase unit in alcove near 231 elec room 9. Install dual monitor arm to desk in room 225 10. Install 6 Executive 4 leg wooden side chairs <p>PRICE IS BASED ON PREVAILING WAGE PRICE IS BASED ON ST DELIVERY TO SITE AND INSTALL PRICE IS BASED ON (2) DAY PRICE IS BASED ON (1) TRIP PRICE IS BASED ON "FREE AND CLEAR" ACCESS TO SPACE. ANY</p>	15,500.00	15,500.00
-----	-------------	---	-----------	-----------

PARRON HALL

9655 Granite Ridge Dr., Suite 100
San Diego, CA 92123

Proposal

Order Number	63478
Date	09/05/2023
Customer PO No	
Customer Acct	CITYLAN
Salesperson	Kay Boyce
Project Number	7231
Terms	NET 10
Page	26 of 29

		CONDITIONS OUTSIDE OF "FREE AND CLEAR" WILL RESULT IN ADDITIONAL CHARGES RESULTING IN LOSS OF EFFICIENCY.		
--	--	--	--	--

Order Sub-Total : \$112,715.78

10.2500%-LANCASTER-93534-2461-LOS ANGELES : \$11,553.27

TOTAL ORDER : \$124,269.05

PRICES QUOTED ARE FIRM FOR 30 DAYS FROM THE DATE OF THIS PROPOSAL. PLEASE REVIEW THIS PROPOSAL AND NOTIFY US PROMPTLY OF ANY CORRECTIONS REQUIRED. THANK YOU FOR THE OPPORTUNITY TO BE OF SERVICE.

Signature: _____ Name: _____ Title: _____ Date: _____

SUBJECT TO THE FOLLOWING TERMS & CONDITIONS

PARRON HALL

Proposal

Order Number	63478
Date	09/05/2023
Customer PO No	
Customer Acct	CITYLAN
Salesperson	Kay Boyce
Project Number	7231
Terms	NET 10
Page	27 of 29

9655 Granite Ridge Dr., Suite 100
San Diego, CA 92123

TERMS AND CONDITIONS OF SALE

1) OFFER TO SELL; PRICE. This proposal constitutes an offer to sell the goods and services described on the front of this form ("Products") at the prices quoted, on the following terms and conditions. Prices quoted are firm for 30 days from the date of this proposal.

2) CREDIT TERMS AND DEPOSIT. The credit terms of sale and deposit requirements for order placement will be based upon credit approval.

3) NO CANCELLATIONS. It is understood that the Products covered by this proposal are to be specially ordered by Seller to meet Buyer's particular specifications. For this reason, upon order placement and acceptance by the relevant manufacturer, orders cannot be canceled following order placement.

4) ACCEPTANCE. The offer to sell may be accepted in writing and shall be accompanied by the required deposit amount (see also ¶12).

5) TERMS OF PAYMENT. Seller will render an invoice upon the earlier of delivery of the Products to Buyer's premises or into storage as provided in ¶7(c). Seller will invoice for shipments that comprise less than the entire order. Invoices for installation or other services performed by Seller that are separately quoted will be rendered when the services are substantially complete. The terms of sale for the balance due net of deposit or deposits received, are net 10 from the date of invoice. Buyer agrees to pay a finance charge of 1½% per month on all delinquent invoices. Unless arranged in advance with Seller, all payments shall be made by bank or cashier's check. In the event of any material discrepancy between the Products ordered and the Products received or in the event Product received is damaged, Buyer may withhold payment only with respect to the items in question, with the balance shown on Seller's invoice due and payable as provided above.

6) PERMITS AND PLANS

a) Permits. Buyer, at Buyer's own expense, agrees to be solely responsible for obtaining any building permits or other permits required for the installation of the products covered by this sales transaction.

b) Floor Plans. Buyer warrants the accuracy of all plans, drawings, dimensions and floor plans provided by the Buyer or Buyer's contractors or agents to the Seller. In the event there are any material deviations in the actual dimensions of Buyer's premises from the specifications provided to Seller, Buyer shall be responsible for any additional costs or charges incurred or imposed by Seller to modify or replace Products to accommodate such deviations.

7) DELIVERY, STORAGE AND INSTALLATION.

a) Time of Delivery. Products will be delivered to the Buyer upon receipt, unless other arrangements have been made in advance. Upon request, Seller will advise Buyer of the estimated delivery date of Products, as determined by Seller based on the published Lead Times of the relevant manufacturer for Products ordered, after allowing for applicable shipping and delivery periods. For purposes of this Agreement, "Lead Time" with respect to a Product means the period of time (expressed in weeks) between the date the order is placed and accepted by the relevant manufacturer and the date the manufacturer commits to ship the Products. Seller will diligently monitor shipping dates and make every effort to coordinate shipping and delivery to accommodate Buyer's needs. Seller will be held responsible for delays due to Seller's own negligence. However, Seller will not be considered negligent nor be held responsible for any delay in shipping or delivery caused in whole or in part by labor disputes, strikes, war, riots, insurrection, any governmental action, fire, flood, accident, storm or any act of God.

b) Condition of Site. The delivery site shall be clean, clear and free of debris prior to the installation. Electric current, heat, protective flooring, and elevator service at the delivery site will be furnished by Buyer without charge to Seller. In the event hoisting is required, Buyer will be responsible for all associated costs. Adequate facilities for off-loading, staging, moving and handling merchandise shall be provided by Buyer without charge to Seller. All furniture must have clear and easy access to final placement site. Buyer is responsible for final hardwire electrical connection of electrified furniture and furniture systems. Delivery and installation will be made during normal working hours. Buyer shall provide appropriate security during and after normal working hours at the delivery or storage site. If Buyer requests, Seller will be responsible to follow Buyer's basic security procedures to secure the facility such as locking up and setting the building alarm. Additional labor costs resulting from building restrictions or overtime work performed at the Buyer's request will be charged to Buyer.

c) Storage and Handling Charges. Buyer agrees that the premises for the delivery and installation of the Products will be available not later than the end of the applicable Lead Time. Provided the Products are not delivered prior to the end of the applicable Lead Time, if the premises for delivery and installation are not available, Seller will endeavour to work within the constraints imposed, and will try to accommodate the Buyer's schedule as best as possible. In the event no reasonable alternative is found, Buyer will provide safe and adequate storage space. (See also ¶ 10.) If the storage space provided is not conveniently located to the installation site or in some other way necessitates excess handling, Buyer agrees to pay Seller's handling charges. If the Products must be stored offsite or at Seller's facility, Buyer agrees to pay Seller's handling charges and storage and transport charges. If the Products must be moved from or within the site due to progress of other trades or other reasons attributable to Buyer, Seller will provide reasonable accommodation. Should the progress of other trades or reasons attributable to the Buyer necessitate excessive movement of product by Seller, Buyer agrees to pay Seller's handling charges.

PARRON HALL

Proposal

Order Number	63478
Date	09/05/2023
Customer PO No	
Customer Acct	CITYLAN
Salesperson	Kay Boyce
Project Number	7231
Terms	NET 10
Page	28 of 29

9655 Granite Ridge Dr., Suite 100
San Diego, CA 92123

d) Labor Agreements. Seller's ability to erect or assemble goods knocked down or to permanently attach, affix, or bolt in place moveable goods is dependent upon jurisdictional labor agreements. If trade regulations enforced at the time of installation require the use of a tradesman at the site other than Seller's own installation personnel, all resulting additional cost will be paid by Buyer.

8) CHANGES. Subject to the provisions of ¶13 that orders are not subject to cancellation, in the event Buyer desires to make any change in the specifications of the Products to be ordered and delivered hereunder, Buyer shall immediately provide Seller with a written change notice, specifying the deviations or changes requested. Any requested change shall be subject to Seller's ability to conform, approval of the relevant manufacturer, and Buyer's agreement to pay any and all restocking or other similar charges imposed by the manufacturer, shipper or Seller. A change notice shall become effective only when signed by both Buyer and Seller, evidencing Buyer's agreement to any additional charges to be incurred and to any resulting changes in delivery or installation schedules.

9) INSPECTION AND ACCEPTANCE. The Products and any installment thereof shall be inspected for damage and conformity to specifications by Buyer upon the latter of either delivery or completion of installation. Buyer shall give Seller notice within 72 hours after delivery of any defects or omissions.

10) RISK OF LOSS. Title to the Products shall remain with the Seller until Buyer takes physical possession of the Products. Risk of loss to the Products passes to Buyer upon delivery to Buyer's premises or into storage on Buyer's behalf, including specifically the risk of damage to Products by other trades on job sites. It is specifically agreed that the risk of loss shall not be altered by the fact that the conduct of either party hereto may constitute a default or breach.

11) MANUFACTURER'S WARRANTY; DISCLAIMER. All Products sold hereunder are subject to the manufacturer's express warranty. No other express or implied warranty is made in respect to the Products. No agent or representative of Seller is authorized to make any additional representations or warranties unless in writing and made a part of these terms and conditions. Although COM fabrics are not warranted by the seating manufacturers for use on their products, thereby limiting Seller's ability to extend any guarantee for COM fabrics and their application, Seller will work diligently to resolve any issues that may occur in conjunction with COM fabrics to the extent defined.

12) BUYER'S REMEDIES. With respect to any installation or other similar services performed by Seller, Seller warrants such services to be free from defects for a period of one (1) year. Seller shall, upon reasonable notice from Buyer, diligently undertake and complete the reinstallation, repair or replacement of any Product necessary to remedy any defect arising from the performance of such services. Such reinstallation, replacement and repair shall be the sole remedy of Buyer with respect to any such defect and shall be in lieu of any other remedy available by applicable law. Buyer shall have no right to cover by procuring substitute goods and no right to incidental consequential damages.

13) NOTICES. All notices or communications which any party may be required or may desire to send in connection with this Agreement will be in writing, will reference this Agreement, and will be deemed given: (i) when transmitted, if sent by facsimile, with confirmation of transmission; (ii) upon receipt, if sent by personal delivery, or (iii) one (1) working day after deposit with a commercial overnight delivery service, with written verification of receipt. All notices or other communications will be sent to the addresses set forth on the front of this form, or to such other address as may be designated by a Party by giving notice to the other Party as provided hereunder.

14) MISCELLANEOUS

a) Final Agreement. This writing is intended by the Buyer and Seller as a final expression of their agreement and is intended as a complete and exclusive statement of the terms of their agreement. There are no other agreements expressed or implied other than those specified herein and set forth in the specifications, delivery and installation schedules.

b) Modifications. The terms and conditions set forth herein shall not be deemed altered or modified by any purchase order or other form delivered by Buyer to Seller. This Agreement can be modified or rescinded only by a writing signed by both of the parties or their duly authorized agents.

c) Authority of Seller's Agents. No agent, employee or representative of the Seller has any authority to bind the Seller to any affirmation, representation or warranty concerning the Products sold hereunder and unless an affirmation, representation or warranty made by an agent, employee, or representative is specifically included within this written agreement, it has not formed a part of the basis of this bargain and shall not in any way be enforced by Buyer.

d) Applicable Law. This Agreement shall be deemed to have been executed and delivered within the State of California, and the rights and obligations of the parties hereto shall be construed and enforced in accordance with, and governed by, the laws of the State of California.

e) Necessary Acts. Each party to this Agreement agrees to perform any further acts and execute and deliver any further documents that may be reasonably necessary to carry out the provisions of this Agreement.

f) Waiver. Waiver of any term of these terms and conditions shall not be a waiver of the remaining terms and conditions.

g) Attorney's Fees. Should legal action or proceedings be instituted to interpret or enforce these terms or conditions, the prevailing party shall be entitled to recover all costs



9655 Granite Ridge Dr., Suite 100
San Diego, CA 92123

Proposal

Order Number	63478
Date	09/05/2023
Customer PO No	
Customer Acct	CITYLAN
Salesperson	Kay Boyce
Project Number	7231
Terms	NET 10
Page	29 of 29

including reasonable attorney's fees.

h) Dispute Resolution. In the event of any dispute arising out of or relating to this Agreement, or the breach thereof, the parties agree first to try in good faith to settle the dispute by mediation under the Commercial Mediation Rules of the American Arbitration Association, before resorting to arbitration. Thereafter, any remaining unresolved controversy or claim arising out of or relating to this Agreement, or breach thereof, shall be settled by arbitration in San Diego, California, in accordance with the Commercial Arbitration Rules of the American Arbitration Association, and judgment upon the award rendered by the arbitrator(s) may be entered in any court having jurisdiction thereof.

NEW ADD ON FURNITURE

PHASE 1

PHASE 2

#1

#2

#4

#5

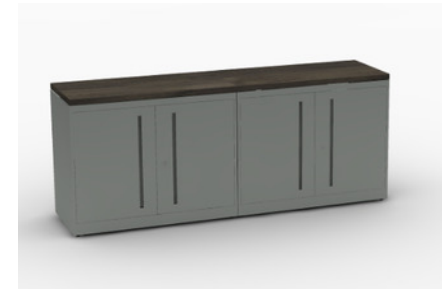
#6

#7

#8

#9

#10



180/42W/29H 2 DRAWER LATERAL
FILES WITH LAMIANTE TOP



140/30W/72H LAMIANTE BOOKCASE



24X 19H LAMIANTE TABLE



METAL FILE/FILE SUPPORT
PEDESTAL

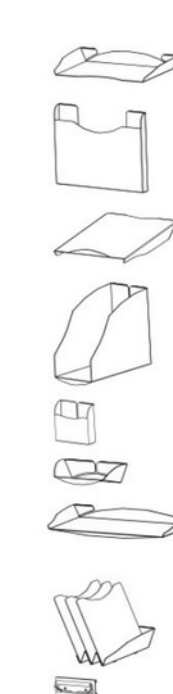


180/36W/29H 2 DRAWER LATERAL
FILES WITH LAMIANTE TOP

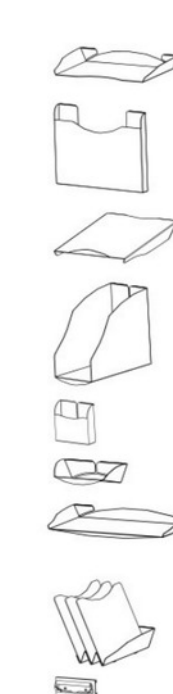


2 MAIL BOX FOR CUBE

2 MAIL BOX FOR CUBE 168-19



QTY 10 OF EACH ADDED NEW.
NO DESIGNATED DESKS. FOR
INVENTORY



24X 19H LAMIANTE TABLE



24X 19H LAMIANTE TABLE



24X 19H LAMIANTE TABLE



24X 19H LAMIANTE TABLE



24X 19H LAMIANTE TABLE



24X 19H LAMIANTE TABLE



24X 19H LAMIANTE TABLE



24X 19H LAMIANTE TABLE



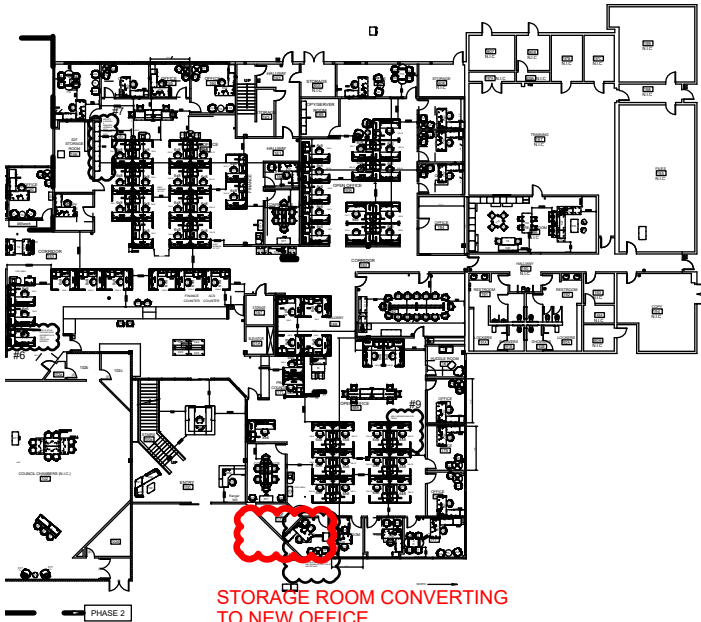
24X 19H LAMIANTE TABLE



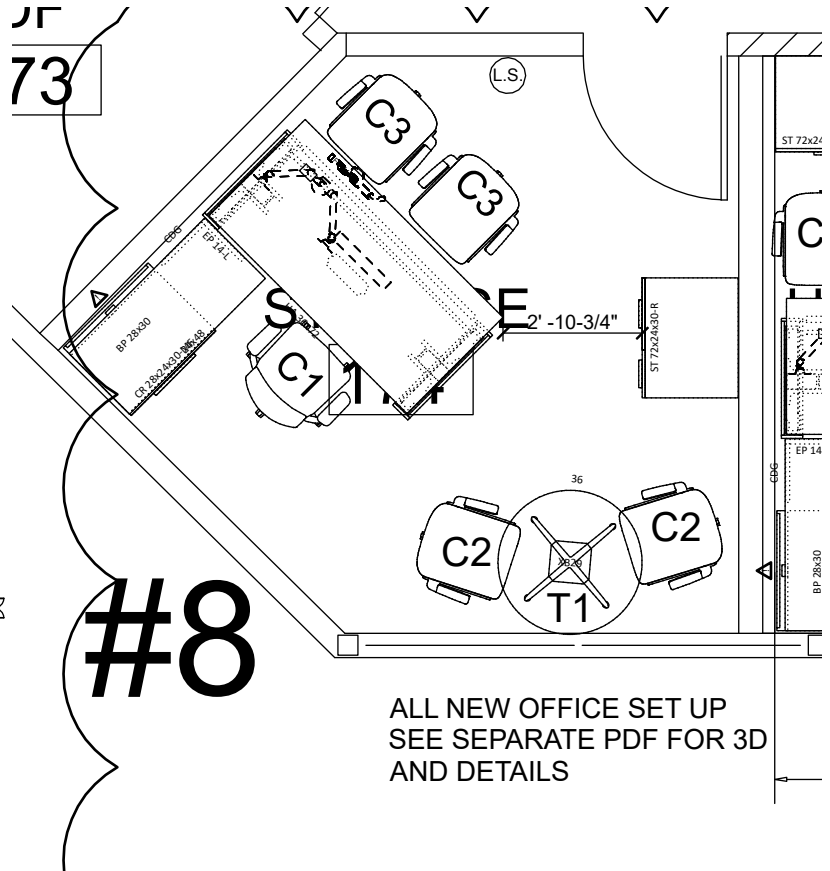
24X 19H LAMIANTE TABLE

PARRON HALL

PROJECT NO: 15222
DRAWN BY: Katelyn M.
SCALE: 1/8"=1'-0"
DATE: 3/15/2023
REV # DATE BY
1 3/15/2023
2 3/15/2023
3 3/15/2023
4 3/15/2023
5 3/15/2023
CLIENT APPROVAL: _____



STORAGE ROOM CONVERTING
TO NEW OFFICE
ALL FURNITURE SHOWN
PROPOSED AS NEW



ALL NEW OFFICE SET UP
SEE SEPARATE PDF FOR 3D
AND DETAILS

City of Lancaster

First Floor Furniture Plan

44933 Fern Avenue, Lancaster, CA 93534

PROJECT NO:

DRAWN BY: Kristy M

DATE: 7/31/2023

REVISION: --

SCALE: NONE

PAGE NUMBER: 2/2

PARRON HALL

9655 Granite Ridge Drive, Suite 100 | San Diego, CA 92123 | 858 268 1212 | www.parronhall.com

#1

18D/36W/29H LATERAL FILE WITH LAMIANTE TOP

#2

18D/36W/64H LATERAL FILE

#3

QTY 4-18D/36W/64H LATEARL FILE/STORAGE CABINET COMBOS
QTY 2-18D/36W/29H LATERAL FILES WITH 18X72 LAMINATE TOP
ALL KEYED SEPARATELY

#4

18D/36W/29H STORAGE CABINET

#5

QTY 2-15D/30W/68H VENEER BOOKCASES
(SAME VENEER COLOR AS STORAGE BELOW TV)

#6

QTY 5-18D/36W/64H LATEARL FILE/STORAGE CABINET COMBOS
QTY 1-18D/36W/64H LATEARL FILE/STORAGE CABINET COMBOS
ALL KEYED SEPARATELY

#8

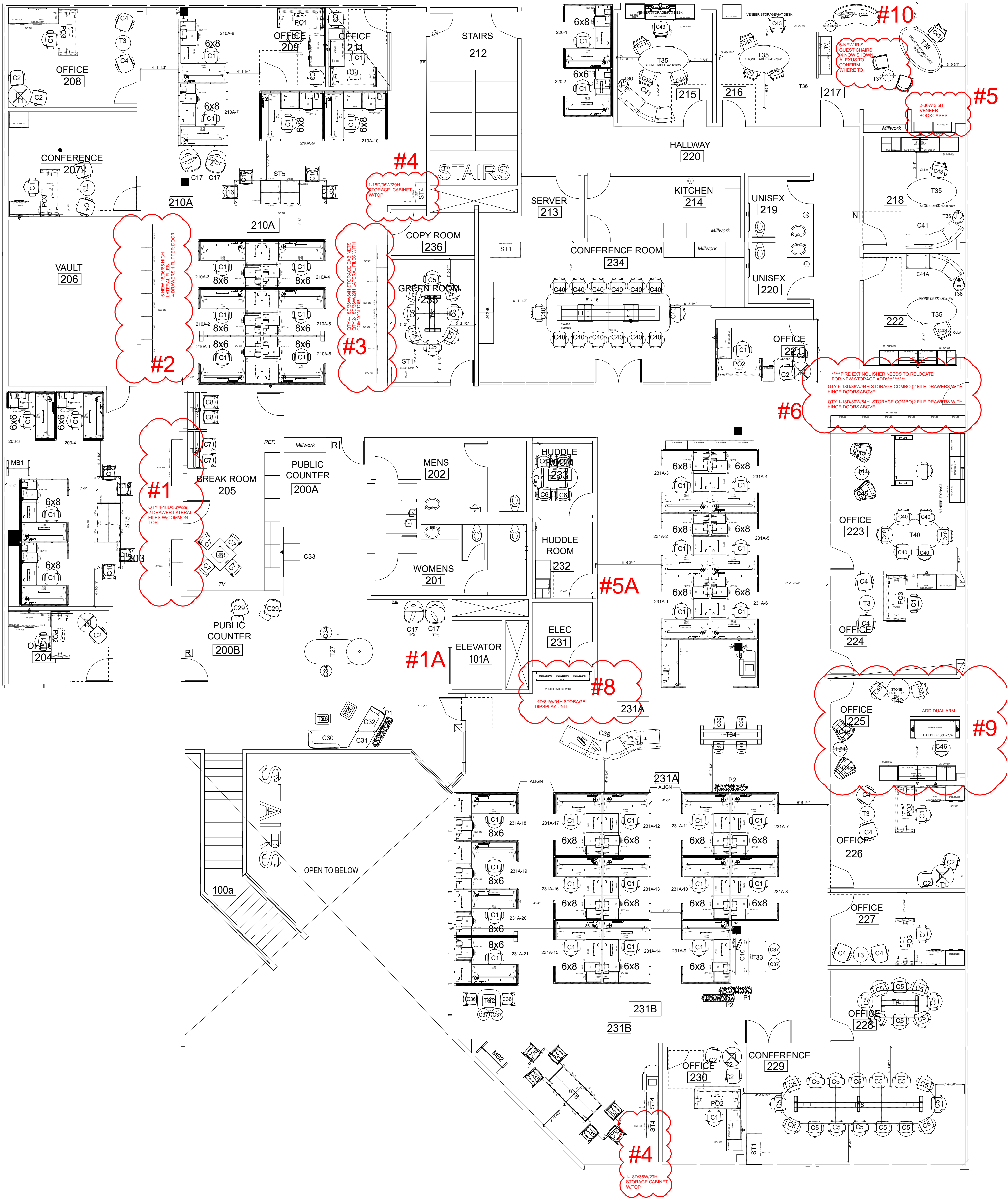
14D/84W/58H METAL DISPLAY SHELF WITH LAMINATE SHELVES & DISPLAT BOXES
PAINT: STORM LAMINATE: PORTABELLO

#9

NEW MONITOR ARM FOR PRIVATE OFFICE 225

#10

6 NEW GUEST CHAIRS FOR ROOM 217
(ONLY 2 INSTALLED IN ROOM, ALEXIUS TO CONFIRM WHERE EXTRA 4 WILL GO)



ADDS